

St Vincent & the Grenadines Port Authority

Annual Statistical Publication



2015



TABLE OF CONTENTS

Forward	i
Definition of Terms and Abbreviation	ii
Cargo Statistics	1-10
Container Statistics	11-16
Vessel Statistics	17
Cruise Statistics	18-19
Vehicle Statistics	20
Barrel Statistics	21

Foreward

The mission of the St. Vincent and the Grenadines Port Authority is “to provide a co-ordinated, effective and efficient system of Port facilities and services to the highest level of satisfaction of the general public thereby contributing to national development.”

Critical in achieving the goals of the mission statement is the collection, analysis and dissemination of data to our internal and external customers, other government agencies and stakeholders within the maritime sector. Hence, reliable and quality data is an essential tool for the efficient and effective decision making.

As a partner in economic development in St. Vincent and the Grenadines, the SVGPA is pleased once again to provide you with our Annual Statistical Publication.

It is our hope that the information contained in this Publication would indeed aid the maritime sector in making critical decisions.

Signed.

Bishen John
Chief Executive Officer

TERMS AND ABBREVIATIONS

TEU	-	Twenty-foot equivalent unit
TONS (TONNAGE)	-	A measurement equivalent to 2,000 lbs (American) or 2,240 lbs (English) or 35 cubic feet
CONT. (CONTAINERIZED)	-	Cargo shipped in containers
TRANSHIPMENT	-	The transferring of cargo from one mode of transport to another or the same mode at a Port, which is not the Port of final destination
GRT	-	Gross Registered Tonnage
NRT	-	Net Registered Tonnage
BREAKBULK	-	Cargo that is loosely shipped in a ship's hold and not in a container
INBOUND	-	Imported or incoming
OUTBOUND	-	Exported or outgoing
THROUGHPUT	-	The total volume in tonnage of import and export
RORO	-	Roll-on Roll-off Container
PAX	-	Passengers
LCL	-	Less Container Load

ST. VINCENT AND THE GRENADINES PORT AUTHORITY

INBOUND

**MONTHLY CARGO TONNAGES STATISTICS BY TYPE - 2015
PORT KINGSTOWN AND CAMPDEN PARK CONTAINER PORT**

MONTH	REGIONAL		EXTRA REGIONAL							TOTALS	
	GEN.CARGO B'BULK	PAPER ROLLS	CEMENT	GEN.CARGO B'BULK	VEHICLES	LUMBER	STEEL	FUEL	CONT.	MTLY	YTD
JANUARY	1,572	-	1,612	60	667	436	-	4,248	13,483	22,078	22,078
FEBRUARY	1,537	-	4,537	208	1,064	384	-	5,902	12,527	26,159	48,237
MARCH	2,230	199	3,097	130	837	396	-	5,011	13,144	25,044	73,281
APRIL	1,326	-	5,021	135	686	594	-	7,075	16,496	31,333	104,615
MAY	2,050	-	4,912	163	1,779	481	180	5,148	17,902	32,615	137,230
JUNE	2,893	-	1,986	290	1,962	148	1	4,024	17,642	28,946	166,176
JULY	1,551	-	6,155	1,124	1,545	401	-	4,611	16,625	32,012	198,188
AUGUST	1,259	-	650	243	1,551	413	-	5,148	17,770	27,035	225,223
SEPTEMBER	1,513	170	3,967	216	814	771	-	4,401	15,958	27,810	253,033
OCTOBER	1,738	129	8,539	358	1,282	175	-	5,599	17,537	35,357	288,390
NOVEMBER	1,769	156	7,213	405	1,965	627	-	4,381	22,635	39,151	327,541
DECEMBER	1,731	-	4,714	551	1,311	-	-	5,686	23,635	37,627	365,169
TOTAL	21,169	654	52,403	3,883	15,464	4,826	181	61,234	205,354	365,169	

ST. VINCENT AND THE GRENADINES PORT AUTHORITY

OUTBOUND

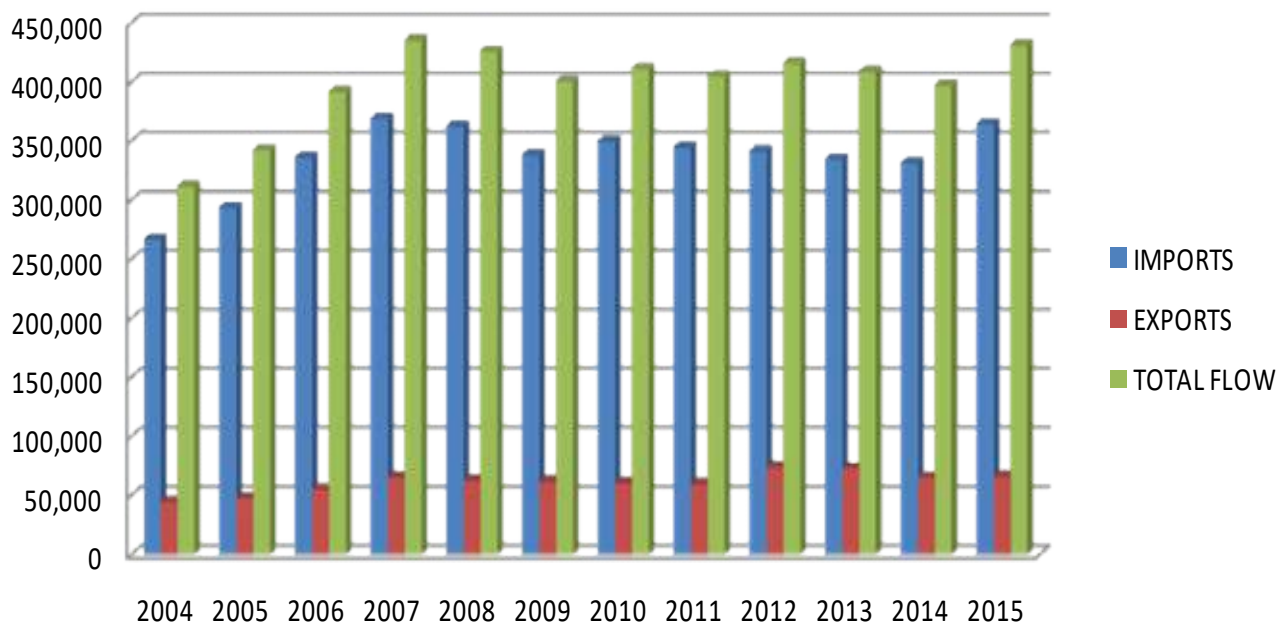
**MONTHLY CARGO TONNAGES STATISTICS BY TYPE - 2015
PORT KINGSTOWN AND CAMPDEN PARK CONTAINER PORT**

MONTH	REGIONAL		EXTRA REGIONAL					TOTALS	
	GEN.CARGO B'BULK	LIVESTOCK	GEN.CARGO B'BULK	REMANUS MISCELLANEOUS	OTHER PRODUCE	VEHICLE	CONT.	MTLY	YTD
JANUARY	1,276	-	8	-	-	-	3,242	4,526	4,526
FEBRUARY	1,528	80	23	-	-	-	3,481	5,112	9,638
MARCH	1,333	-	34	-	3	27	3,932	5,329	14,966
APRIL	1,489	-	15	-	-	-	4,734	6,248	21,215
MAY	2,010	-	50	-	-	-	3,609	5,669	26,884
JUNE	1,560	-	17	-	-	15	3,788	5,380	32,263
JULY	1,617	-	10	-	-	-	4,202	5,829	38,092
AUGUST	1,446	72	26	-	-	-	4,789	6,333	44,425
SEPTEMBER	1,206	-	21	-	-	-	4,311	5,538	49,963
OCTOBER	1,213	-	2	-	-	12	4,259	5,486	55,449
NOVEMBER	1,189	-	39	-	-	65	4,460	5,753	61,202
DECEMBER	1,195	-	36	-	-	-	4,169	5,400	66,602
TOTAL	17,072	162	281	-	3	119	48,975	66,602	

ST. VINCENT AND THE GRENADINES PORT AUTHORITY CARGO THROUGHPUT 2004 - 2015

YEARS	IMPORTS	EXPORTS	TOTAL FLOW	% INCREASE
2004	267,115	45,083	312,198	6
2005	294,316	48,358	342,674	9.8
2006	336,656	55,714	392,370	14.5
2007	369,900	66,037	435,937	11.1
2008	363,146	63,394	426,540	-2.2
2009	338,743	62,312	401,055	-6.0
2010	350,578	61,187	411,765	2.7
2011	345,165	60,132	405,297	-1.6
2012	342,003	74,501	416,504	2.8
2013	335,491	73,805	409,296	-1.7
2014	331,944	65,716	397,660	-2.8
2015	365,169	66,602	431,771	8.6

ST. VINCENT AND THE GRENADINES PORT AUTHORITY TOTAL CARGO FLOW 2004-2015



CAMPDEN PARK CONTAINER PORT (CPCP)
INBOUND
MONTHLY CARGO THROUGHPUT - 2015

MONTH	REGIONAL			EXTRA REGIONAL					TOTALS		
	PAPER ROLLS	GEN. CARGO B/BULK	SUGAR	B.BULK	STEEL	VEHICLES	GEN. CARGO	LUMBER	CONT.	MTLY	YTD
JANUARY						60			13,025	13,085	13,085
FEBRUARY	-	-	-	-	-	-	-	-	11,804	11,804	24,889
MARCH	199	-	-	3	-	-	-	-	11,637	11,839	36,727
APRIL	-	-	-	6	-	10	-	-	14,647	14,663	51,390
MAY	-	-	-	-	180	192	-	-	15,946	16,318	67,709
JUNE	-	-	-	68	1	321	-	148	16,062	16,601	84,309
JULY	-	-	-	-	-	-	184	-	15,759	15,943	100,252
AUGUST	-	-	-	-	-	362	-	-	15,551	15,914	116,165
SEPTEMBER	170	-	-	-	-	-	-	129	14,641	14,940	131,105
OCTOBER	129	-	-	-	-	-	-	-	16,282	16,411	147,516
NOVEMBER	156	-	-	-	-	-	-	-	20,219	20,375	167,892
DECEMBER	-	-	-	-	-	-	-	-	21,918	21,918	189,809
TOTAL	654		-		181	946	184		187,490	189,809	

CAMPDEN PARK CONTAINER PORT (CPCP)
OUTBOUND
MONTHLY CARGO THROUGHPUT - 2015

MONTH	EXTRA REGIONAL			TOTALS	
	MISCELLANEOUS	VEHICLE	CONT.	MTLY	YTD
JANUARY	-		2,785	2,785	2,785
FEBRUARY	-		2,832	2,832	5,618
MARCH	3	27	3,304	3,334	8,952
APRIL	-	-	3,957	3,957	12,909
MAY	-	-	2,892	2,892	15,801
JUNE	-	15	3,141	3,156	18,957
JULY	-	-	3,893	3,893	22,850
AUGUST	-	-	3,781	3,781	26,631
SEPTEMBER	-	-	3,792	3,792	30,423
OCTOBER	-	-	3,787	3,787	34,211
NOVEMBER	-	-	3,658	3,658	37,868
DECEMBER			3,048	3,048	40,916
TOTAL	3	42	40,871	40,916	

PORT KINGSTOWN
INBOUND
MONTHLY CARGO THROUGHPUT - 2015

MONTH	REGIONAL	EXTRA REGIONAL						TOTALS	
	GEN.CARGO	CEMENT	GEN.CARGO	VEHICLES	LUMBER	FUEL	CONT.	MTLY	YTD
JANUARY	1,572	1,612	60	607	436	4,248	458	8,993	8,993
FEBRUARY	1,537	4,537	208	1,064	384	5,902	723	14,355	23,348
MARCH	2,230	3,097	127	837	396	5,011	1,508	13,206	36,554
APRIL	1,326	5,021	129	676	594	7,075	1,850	16,670	53,224
MAY	2,050	4,912	163	1,587	481	5,148	1,956	16,297	69,522
JUNE	2,893	1,986	222	1,641	-	4,024	1,579	12,346	81,867
JULY	1,551	6,155	940	1,545	401	4,611	866	16,069	97,936
AUGUST	1,259	650	243	1,189	413	5,148	2,220	11,122	109,058
SEPTEMBER	1,513	3,967	216	814	642	4,401	1,317	12,870	121,929
OCTOBER	1,738	8,539	358	1,282	175	5,599	1,255	18,946	140,874
NOVEMBER	1,769	7,213	405	1,965	627	4,381	2,415	18,776	159,650
DECEMBER	1,731	4,714	551	1,311	-	5,686	1,717	15,710	175,360
TOTAL	21,169	52,403	3,622	14,518	4,549	61,234	17,864	175,360	

PORT KINGSTOWN
OUTBOUND
MONTHLY CARGO THROUGHPUT - 2015

MONTH	REGIONAL		EXTRA REGIONAL			TOTALS	
	GEN. CARGO B'BULK	LIVESTOCK	GEN. CARGO B'BULK	VEHICLE	CONT.	MTLY	YTD
JANUARY	1276		8		456	1740	1,740
FEBRUARY	1,528	80	23		649	2,280	4,020
MARCH	1,333	-	34	-	628	1,995	6,015
APRIL	1,499	-	15	-	777	2,291	8,306
MAY	2,010	-	50	-	717	2,777	11,082
JUNE	1,560	-	17	-	647	2,224	13,306
JULY	1,617	-	10	-	309	1,936	15,242
AUGUST	1,446	72	26	-	1,008	2,552	17,794
SEPTEMBER	1,206	-	21	-	518	1,745	19,539
OCTOBER	1,213	-	2	12	472	1,699	21,238
NOVEMBER	1,189	-	39	65	803	2,096	23,334
DECEMBER	1,195	-	36	-	1,122	2,353	25,686
TOTAL	17,072	152	281	77	8,104	25,686	

ST. VINCENT AND THE GRENADINES PORT AUTHORITY

INBOUND

MONTHLY CARGO THROUGHPUT - 2014

MONTH	REGIONAL		EXTRA REGIONAL						TOTALS		
	GEN.CARGO B'BULK	PAPER ROLLS	CEMENT	GEN.CARGO B'BULK	VEHICLES	LUMBER	STEEL	FUEL	CONT.	MTLY	YTD
JANUARY	2,357	763	4,505	285	728	537		4,358	15,577	29,110	29,110
FEBRUARY	1,572	-	2,464	112	824	566	-	5,960	12,341	23,839	52,949
MARCH	1,278	306	5,219	236	1,250	-	56	3,538	14,509	26,392	79,341
APRIL	1,711	-	2,466	265	895	831	-	5,154	14,236	25,558	104,898
MAY	1,671	-	5,214	185	941	-	-	7,373	14,759	30,143	135,041
JUNE	1,731	-	4,297	256	1,130	453	-	2,835	15,671	26,373	161,414
JULY	1,668	-	3,615	224	1,162	-	-	6,452	15,790	28,912	190,325
AUGUST	1,526	233	5,363	243	1,140	555	-	2,214	14,610	25,884	216,209
SEPTEMBER	1,513	-	4,361	205	924	381	-	2,448	12,674	22,506	238,715
OCTOBER	1,799	110	1,563	162	1,107	471	-	6,938	17,656	29,805	268,520
NOVEMBER	2,181	52	2,470	225	707	12	-	5,073	16,733	27,453	295,973
DECEMBER	1,853	-	5,270	473	996	353	-	3,691	23,335	35,971	331,944
TOTAL	20,860	1,464	46,807	2,871	11,803	4,159	56	56,034	187,890	331,944	

ST. VINCENT AND THE GRENADINES PORT AUTHORITY

OUTBOUND

MONTHLY CARGO THROUGHPUT - 2014

MONTH	REGIONAL		EXTRA REGIONAL				TOTALS		
	GEN. CARGO B'BULK	LIVESTOCK	GEN. CARGO B'BULK	BANANAS	OTHER PRODUCE	VEHICLE	CONT.	MTLY	YTD
JANUARY	1,329	-	8	-	-	56	3,478	4,871	4,871
FEBRUARY	869	-	17	-	-	-	4,571	5,457	10,327
MARCH	951	41	21	-	-	-	4,979	5,992	16,319
APRIL	917	-	4	-	-	-	4,335	5,256	21,575
MAY	1,111	-	4	-	-	20	4,621	5,756	27,331
JUNE	1,083	-	9	-	-	399	4,144	5,635	32,966
JULY	811	-	20	-	-	11	4,853	5,695	38,661
AUGUST	877	-	22	-	-	-	4,099	4,998	43,659
SEPTEMBER	788	-	25	-	-	-	3,315	4,128	47,787
OCTOBER	1,099	-	6	-	-	-	4,817	5,922	53,709
NOVEMBER	1,002	-	14	-	-	-	5,488	6,504	60,213
DECEMBER	1,044	-	54	-	4	-	4,442	5,544	65,757
TOTAL	11,881	41	204	-	4	486	53,141	65,757	

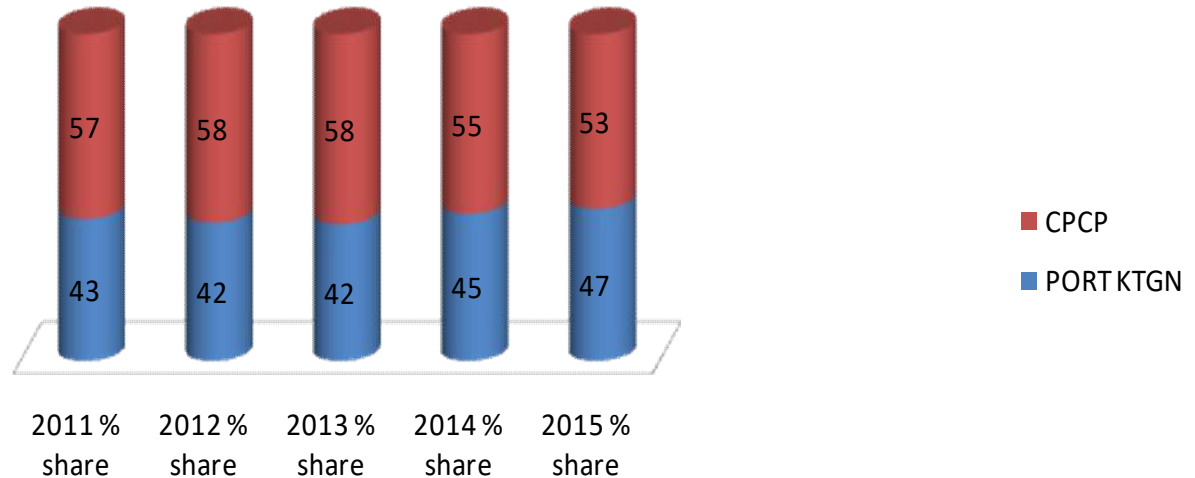
ST. VINCENT AND THE GRENADINES PORT AUTHORITY
TOTAL CARGO FLOW
2010 - 2014

MONTH	TOTAL TONNAGE															
	2013	2014	%	2014	2012	2013	%	2013	2011	2012	%	2012	2010	2011	%	2011
			GROWTH	Y-T-D			GROWTH	Y-T-D			GROWTH	Y-T-D			GROWTH	Y-T-D
JANUARY	30,237	33,981	12.38	33,981	28,085	30,237	7.66	30,237	25,181	28,085	11.53	28,085	25,502	25,181	-1.26	25,181
FEBRUARY	32,637	29,295	-10.24	63,276	37,502	32,637	-12.97	62,874	30,992	37,502	21.00	65,587	30,840	30,992	0.49	25,181
MARCH	31,447	32,343	2.85	95,619	37,581	31,447	-16.32	94,321	37,164	37,581	1.12	103,167	35,155	37,164	5.71	25,181
APRIL	37,159	30,813	-17.08	126,432	41,548	37,159	-10.56	131,480	30,351	41,548	36.89	144,715	31,871	30,351	-4.77	25,181
MAY	36,900	35,898	-2.72	162,330	32,847	36,900	12.34	168,380	35,383	32,847	-7.17	177,562	44,148	35,383	-19.85	25,181
JUNE	35,698	32,007	-10.34	194,337	31,464	35,698	13.46	204,078	28,151	31,464	11.77	209,026	32,964	28,151	-14.60	25,181
JULY	29,013	34,606	19.28	228,943	32,426	29,013	-10.53	233,091	33,396	32,426	-2.90	241,452	34,873	33,396	-4.24	25,181
AUGUST	38,205	30,881	-19.17	259,825	32,871	38,205	16.23	271,296	34,781	32,871	-5.49	274,323	34,742	34,781	0.11	25,181
SEPTEMBER	34,542	26,633	-22.90	286,458	29,827	34,542	15.81	305,838	35,248	29,827	-15.38	304,150	35,666	35,248	-1.17	25,181
OCTOBER	26,768	35,728	33.47	322,185	34,952	26,768	-23.41	332,606	34,971	34,851	-0.34	339,102	33,253	34,971	5.17	25,181
NOVEMBER	38,267	33,957	-11.26	356,142	38,843	38,267	-1.48	370,873	36,476	38,843	6.49	377,944	33,646	36,476	8.41	25,181
DECEMBER	38,423	41,515	8.05	397,657	38,661	38,423	-0.62	409,296	43,203	38,661	-10.51	416,605	39,105	43,203	10.48	25,181
TOTAL	409,296	397,657	-17.67		416,605	409,296	-1.75		405,297	416,504	2.77		411,765	405,297	-1.57	

**ST.VINCENT AND THE GRENADINES PORT AUTHORITY
PERCENTAGE SHARE OF TOTAL CARGO FLOW
2011 - 2015**

YEAR % SHARE	2011 % share		2012 % share		2013 % share		2014 % share		2015 % share	
PORT KTGN	176,155	43	176,232	42	171,195	42	179,218	45	201,046	47
CPCP	229,141	57	240,272	58	238,242	58	218,441	55	230,725	53
TOTAL	405,296		416,504		409,437		397,659		431,771	

**SVG PORT AUTHORITY
PERCENTAGE SHARE OF TOTAL CARGO FLOW
2011 -2015**



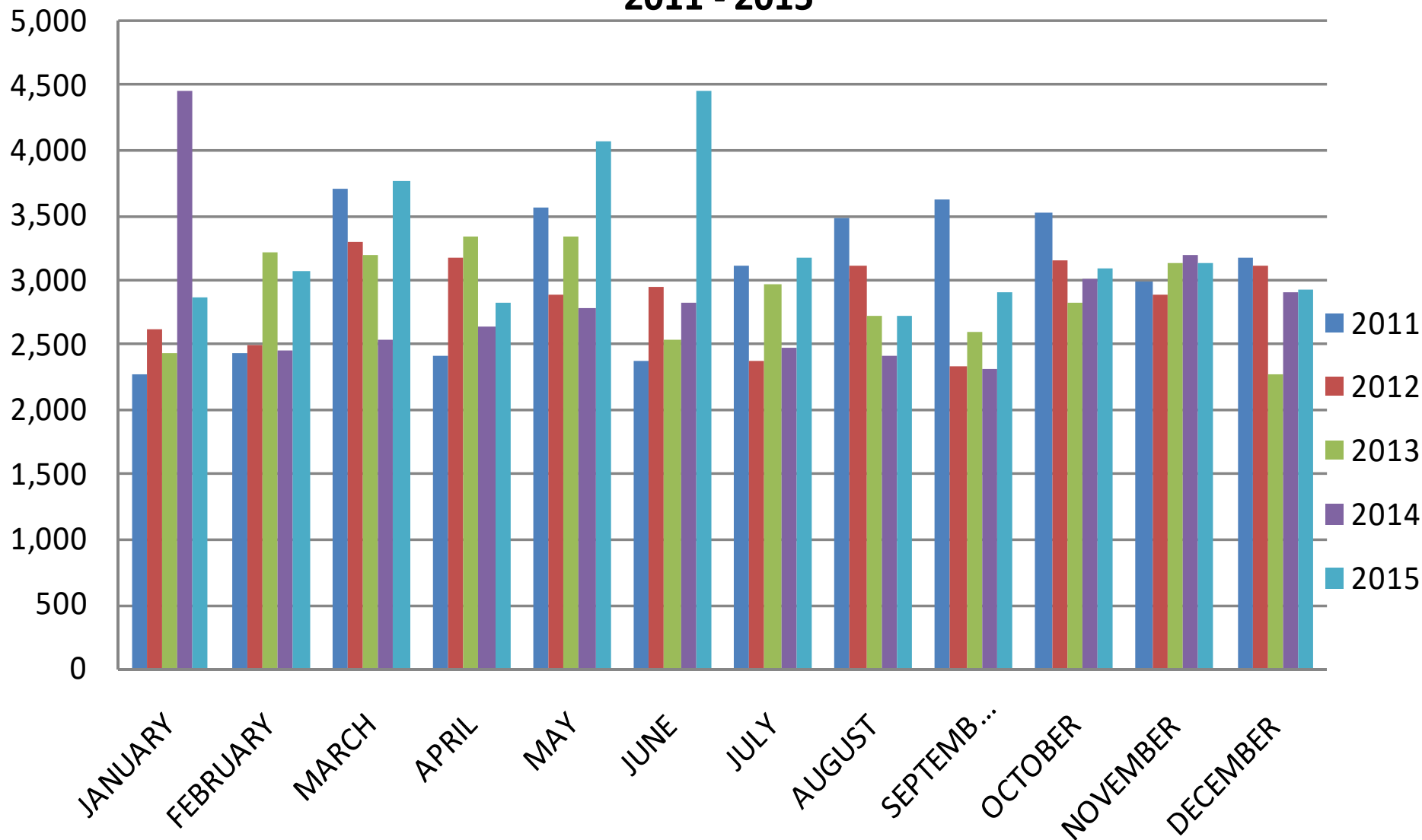
ST. VINCENT AND THE GRENADINES PORT AUTHORITY
REGIONAL CARGO FLOW
2011 - 2015

MONTH																								
	2011 Y-T-D	2012 Y-T-D	% GROWTH	2011	2012	% GROWTH	2012 Y-T-D	2013 Y-T-D	% GROWTH	2012	2013	% GROWTH	2013 Y-T-D	2014 Y-T-D	% GROWTH	2013	2014	% GROWTH	2014 Y-T-D	2015 Y-T-D	% GROWTH	2014	2015	% GROWTH
JANUARY	2,262	2,605	15.16	2,262	2,605	15.16	2,605	2,436	(6.49)	2,605	2,436	(6.49)	2,436	4,449	82.64	2,436	4,449	82.64	4,449	2,848	(35.99)	4,449	2,848	(35.99)
FEBRUARY	4,689	5,096	8.68	2,427	2,491	2.64	5,096	5,638	10.64	2,491	3,202	28.54	5,638	6,890	22.21	3,202	2,441	(23.77)	6,890	5,913	(14.18)	2,441	3,065	25.56
MARCH	8,393	8,374	(0.23)	3,704	3,278	(11.50)	8,374	8,821	5.34	3,278	3,183	(2.90)	8,821	9,425	6.85	3,183	2,535	(20.36)	9,425	9,675	2.65	2,535	3,762	48.40
APRIL	10,808	11,530	6.68	2,415	3,156	30.68	11,530	12,147	5.35	3,156	3,326	5.39	12,147	12,053	(0.77)	3,326	2,628	(20.99)	12,053	12,500	3.71	2,628	2,825	7.50
MAY	14,361	14,410	0.34	3,553	2,880	(18.94)	14,410	15,470	7.36	2,880	3,323	15.38	15,470	14,835	(4.10)	3,323	2,782	(16.28)	14,835	16,560	11.63	2,782	4,060	45.94
JUNE	16,733	17,350	3.69	2,372	2,940	23.95	17,350	17,999	3.74	2,940	2,529	(13.98)	17,999	17,649	(1.94)	2,529	2,814	11.27	17,649	21,013	19.06	2,814	4,453	58.24
JULY	19,828	19,722	(0.53)	3,095	2,372	(23.36)	19,722	20,968	6.32	2,372	2,969	25.17	20,968	20,128	(4.01)	2,969	2,479	(16.50)	20,128	24,181	20.14	2,479	3,168	27.79
AUGUST	23,295	22,827	(2.01)	3,467	3,105	(10.44)	22,827	23,675	3.71	3,105	2,707	(12.82)	23,675	22,531	(4.83)	2,707	2,403	(11.23)	22,531	26,886	19.33	2,403	2,705	12.57
SEPTEMBER	26,909	25,148	(6.54)	3,614	2,321	(35.78)	25,148	26,267	4.45	2,321	2,592	11.68	26,267	24,832	(5.46)	2,592	2,301	(11.23)	24,832	29,775	19.91	2,301	2,889	25.55
OCTOBER	30,411	28,298	(6.95)	3,502	3,150	(10.05)	28,298	29,080	2.76	3,150	2,813	(10.70)	29,080	27,840	(4.26)	2,813	3,008	6.93	27,840	32,855	18.01	3,008	3,080	2.39
NOVEMBER	33,384	31,167	(6.64)	2,973	2,869	(3.50)	31,167	32,197	3.30	2,869	3,117	8.64	32,197	31,023	(3.65)	3,117	3,183	2.12	31,023	35,969	15.94	3,183	3,114	-2.17
DECEMBER	36,549	34,260	(6.26)	3,165	3,093	(2.27)	34,260	34,470	0.61	3,093	2,273	(26.51)	34,470	33,920	(1.60)	2,273	2,897	27.45	33,920	38,895	14.67	2,897	2,926	1
TOTAL				36,549	34,260	-6.26				34,260	34,470	0.61				34,470	33,920	-1.60				33,920	38,895	14.67

ST. VINCENT AND THE GRENADINES PORT AUTHORITY

REGIONAL CARGO FLOW

2011 - 2015



St. Vincent and the Grenadines Port Authority Throughput Comparison 2014 - 2015

Port Kingstown

Year	2015	2014	% growth
Inbound	175,360	159,139	10.19
Outbound	25,686	20,078	27.93
Total	201,046	179,217	12.18

CPCP

Year	2015	2014	% growth
Inbound	189,809	172,803	9.84
Outbound	40,916	45,638	-10.35
Total	230,725	218,441	5.62

COMBINED

Year	2015	2014	% growth
Inbound	365,169	331,944	10.01
Outbound	66,602	65,757	1.29
Total	431,771	397,701	8.57

Given the internal and external factors affecting the economy, the St. Vincent and the Grenadines Port Authority was able to combat these forces and produce favourably in 2015. There was an overall increase in total tonnages by 34,114 tons or 8.58%.

Port Kingstown realized an overall increase by 21,829 tons or 12.10% while CPCP realized an overall increase by 12,284 tons or 5.6%

Increases in cargo types throughout the year resulted in the positive output in 2015. These increases occurred mainly in extra regional general cargo break bulk, vehicles, lumber, fuel and container tonnage. Increases were also recognised in cargo type exported; namely: regional general cargo break bulk.

ST. VINCENT AND THE GRENADINES PORT AUTHORITY
MONTHLY CONTAINER STATISTICS AT PORT KINGSTOWN
2014

INBOUND/OUTBOUND

MONTH		DOMESTIC						TOTALS						LANDED/LOADED		TONNAGE
		10FT		20FT		40FT		10FT		20FT		40FT		BOXES	TEUS	
		MT	F	MT	F	MT	F	MT	F	MT	F	MT	F			
JANUARY	IN	-	3	31	46	-	36	-	3	31	46	-	36	116	151	2,311
	OUT	3	-	22	40	28	8	3	-	22	40	28	8	101	135.5	884
FEBRUARY	IN	-	3	24	32	-	14	-	3	24	32	-	14	73	85.5	1,324
	OUT	3	-	10	31	16	7	3	-	10	31	16	7	67	88.5	782
MARCH	IN	-	1	12	33	-	22	-	1	12	33	-	22	68	89.5	1,567
	OUT	2	-	9	23	18	7	2	-	9	23	18	7	59	83.0	560
APRIL	IN	-	2	6	28	-	13	-	2	6	28	-	13	49	61.0	1,226
	OUT	-	1	26	21	14	6	-	1	26	21	14	6	68	87.5	531
MAY	IN	-	3	6	24	-	15	-	3	6	24	-	15	48	61.5	1,068
	OUT	-	-	10	16	9	4	-	-	10	16	9	4	39	52.0	303
JUNE	IN	-	6	21	24	-	21	-	6	21	24	-	21	72	90.0	1,331
	OUT	6	-	22	31	12	12	6	-	22	31	12	12	83	104.0	723
JULY	IN	-	4	-	30	-	7	-	4	-	30	-	7	41	46.0	899
	OUT	4	1	10	15	8	3	4	1	10	15	8	3	41	49.5	323
AUGUST	IN	-	2	-	19	-	20	-	2	-	19	-	20	41	60.0	1,214
	OUT	4	-	8	17	12	2	4	-	8	17	12	2	43	55.0	309
SEPTEMBER	IN	-	4	9	26	-	25	-	4	9	26	-	25	64	87.0	1,616
	OUT	1	-	13	22	28	5	1	-	13	22	28	5	69	101.5	517
OCTOBER	IN	-	3	21	15	-	14	-	3	21	15	-	14	53	65.5	831
	OUT	-	2	9	26	7	5	-	2	9	26	7	5	49	60.0	671
NOVEMBER	IN	-	4	-	37	-	34	-	4	-	37	-	34	75	107.0	2,150
	OUT	3	1	28	42	34	4	3	1	28	42	34	4	112	148.0	966
DECEMBER	IN	-	3	26	23	-	25	-	3	26	23	-	25	77	100.5	2,014
	OUT	-	1	21	45	25	3	-	1	21	45	25	3	95	122.5	1,008
TOTAL	IN	-	38	156	337	-	246	-	38	156	337	-	246	777	1004.0	17,552
	OUT	26	6	188	329	211	66	26	6	188	329	211	66	826	1087.0	7,579
Grand Total		26	44	344	666	211	312	26	44	344	666	211	312	1,603	2,091	25,131

ST. VINCENT AND THE GRENADINES PORT AUTHORITY
MONTHLY CONTAINER STATISTICS AT CAMPDEN PARK CONTAINER PORT
2014

INBOUND/OUTBOUND

MONTH		DOMESTIC				TOTALS				LANDED/LOADED		TONNAGE
		20FT		40FT		20FT		40FT		BOXES	TEUS	
		MT	F	MT	F	MT	F	MT	F			
JANUARY	IN	5	211	3	169	5	211	3	169	388	560	13,266
	OUT	168	77	190	25	168	77	190	25	460	675	2,593
FEBRUARY	IN	21	142	3	154	21	142	3	154	320	477	11,017
	OUT	112	106	132	38	112	106	132	38	388	558	3,788
MARCH	IN	17	181	-	207	17	181	-	207	405	612	12,942
	OUT	64	130	165	36	64	130	165	36	395	596	4,419
APRIL	IN	-	156	-	193	-	156	-	193	349	542	13,010
	OUT	73	105	168	34	73	105	168	34	380	582	3,804
MAY	IN	31	189	-	180	31	189	-	180	400	580	13,691
	OUT	65	128	151	34	65	128	151	34	378	563	4,317
JUNE	IN	17	173	-	220	17	173	-	220	410	630	14,339
	OUT	86	91	133	36	86	91	133	36	346	515	3,421
JULY	IN	23	192	-	225	23	192	-	225	440	665	14,891
	OUT	95	145	214	30	95	145	214	30	484	728	4,530
AUGUST	IN	41	154	-	204	41	154	-	204	399	603	13,396
	OUT	81	106	159	32	81	106	159	32	378	569	3,789
SEPTEMBER	IN	-	135	-	167	-	135	-	167	302	469	11,058
	OUT	64	84	163	36	64	84	163	36	347	546	2,798
OCTOBER	IN	40	191	0	239	40	191	-	239	470	709	16,825
	OUT	94	125	169	33	94	125	169	33	421	623	4,146
NOVEMBER	IN	63	156	-	243	63	156	-	243	462	705	14,582
	OUT	44	118	129	52	44	118	129	52	343	524	4,523
DECEMBER	IN	-	251	-	308	-	251	-	308	559	867	21,321
	OUT	109	94	241	31	109	94	241	31	475	747	3,434
TOTAL	IN	258	2,131	6	2,509	258	2,131	6	2,509	4,904	7,419	170,338
	OUT	1,055	1,309	2,014	417	1,055	1,309	2,014	417	4,795	7,226	45,562
Grand Total		1,313	3,440	2,020	2,926	1,313	3,440	2,020	2,926	9,699	14,645.0	215,900

**ST. VINCENT AND THE GRENADINES PORT AUTHORITY
CONTAINER TRAFFIC (2014 – 2015)**

MONTH	DOMESTIC TEUS			TOTAL TONNAGE (Short)		
	2014	2015	GROWTH (%)	2014	2015	GROWTH (%)
1ST QUARTER						
JANUARY	1,521	1,677	10.26	19,054	16,725	(12.22)
FEBRUARY	1,209	1,154	-4.55	16,912	16,008	(5.35)
MARCH	1,381	1,182	-14.38	19,489	17,076	(12.38)
	4,110.5	4,013	(8.67)	55,455	49,809	(29.95)
2ND QUARTER						
APRIL	1,273.5	1488.5	16.88	18,571	21,231	14.32
MAY	1,256.5	1350.5	7.48	19,380	21,511	11.00
JUNE	1,339.0	1,577.00	17.77	19,814	21,429	8.15
	3,869.0	4,416.0	42.14	57,765.4	64,171	33.47
3RD QUARTER						
JULY	1,488.5	1462.5	-1.75	20,643	20,826	0.89
AUGUST	1,287.0	1775.5	37.96	18,708	22,560	20.59
SEPTEMBER	1,203.5	1511.5	25.59	15,989	20,269	26.76
	3,979.0	4749.5	61.80	55,341	63,655	48.24
4TH QUARTER						
OCTOBER	1,458	1,609	10.39	22,472	21,797	(3.01)
NOVEMBER	1,484.0	1,905	28.37	22,221	27,095	21.93
DECEMBER	1837.0	1928	4.95	27,777	27,803	0.09
	4,778.5	5,442	13.89	72,470	76,694	5.83
TOTALS	16,737	18,621	11.25	241,031	254,329	5.52

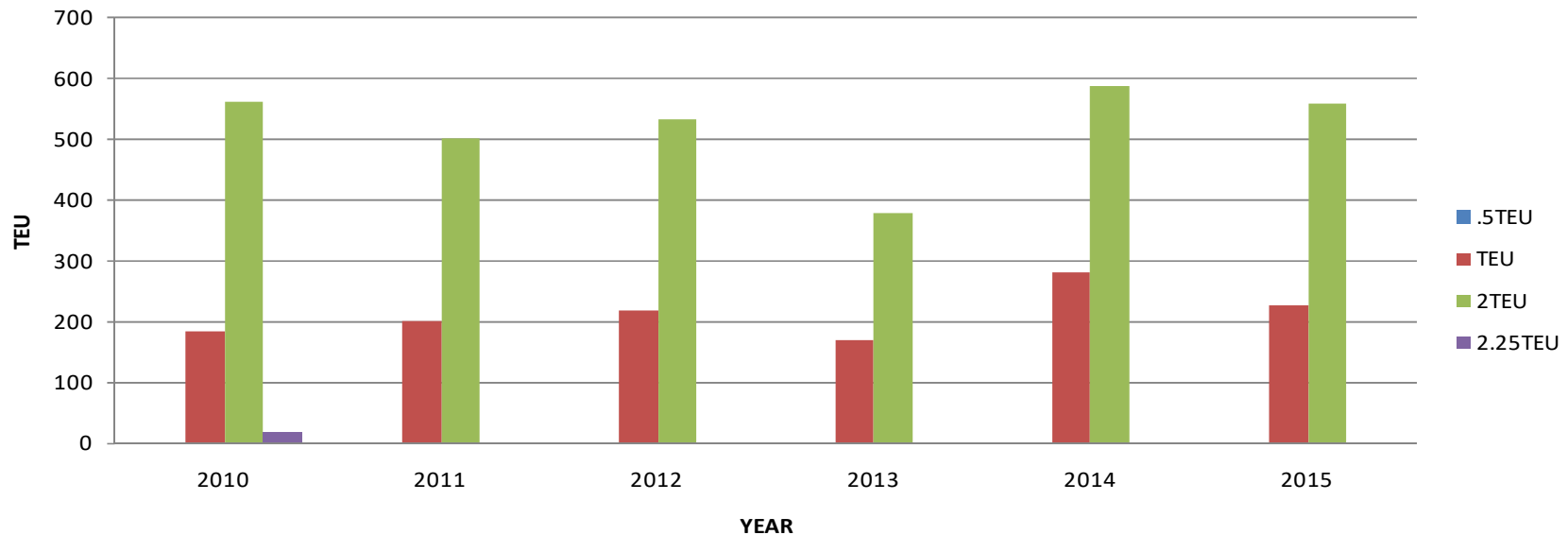
**ST. VINCENT AND THE GRENADINES PORT AUTHORITY
CONTAINER TRAFFIC (2013 – 2014)**

MONTH	DOMESTIC TEUS			TOTAL TONNAGE (Short)		
	2013	2014	GROWTH (%)	2013	2014	GROWTH (%)
1ST QUARTER						
JANUARY	1,420	1,521	7.11	18,184	19,054	4.78
FEBRUARY	1,469	1,209	(17.70)	20,139	16,912	(16.02)
MARCH	1,371	1,381	0.69	19,618	19,489	(0.66)
TOTAL	4,260.0	4,110.5	(3.51)	57,941	55,455	(4.29)
2ND QUARTER						
APRIL	1,274.0	1,272.5	(0.12)	18,453	18,571	0.64
MAY	1,836.0	1,256.5	(31.56)	25,996	19,380	(25.45)
JUNE	1,694.0	1,339.0	(20.96)	21,698	19,814	(8.68)
TOTAL	4,804.0	3,868.0	(19.48)	66,147.0	57,765.4	(12.67)
3RD QUARTER						
JULY	1,350.0	1,488.5	10.26	18,437	20,643	11.97
AUGUST	1,569.0	1,287.0	(17.97)	22,315	18,708	(16.16)
SEPTEMBER	1,404.0	1,203.5	(14.28)	20,828	15,989	(23.23)
TOTAL	4,323.0	3,979.0	(7.96)	61,580.1	55,341	(10.13)
4TH QUARTER						
OCTOBER	1,340	1,458	8.77	18,428	22,472	21.95
NOVEMBER	1,819.5	1,484.0	(18.44)	27,990	22,221	(20.61)
DECEMBER	1884.0	1837.0	(2.49)	25,369	27,777	9.49
TOTAL	5,043.5	4,778.5	(5.25)	71,786.5	72,470.6	0.95
TOTALS	18,431	16,736	(9.19)	257,455	241,032	(6.38)

**ST. VINCENT AND THE GRENADINES PORT AUTHORITY
LESS CONTAINER LOAD STATISTICS FOR 2010-2015
PORT KINGSTOWN AND CAMPDEN PARK CONTAINER PORT**

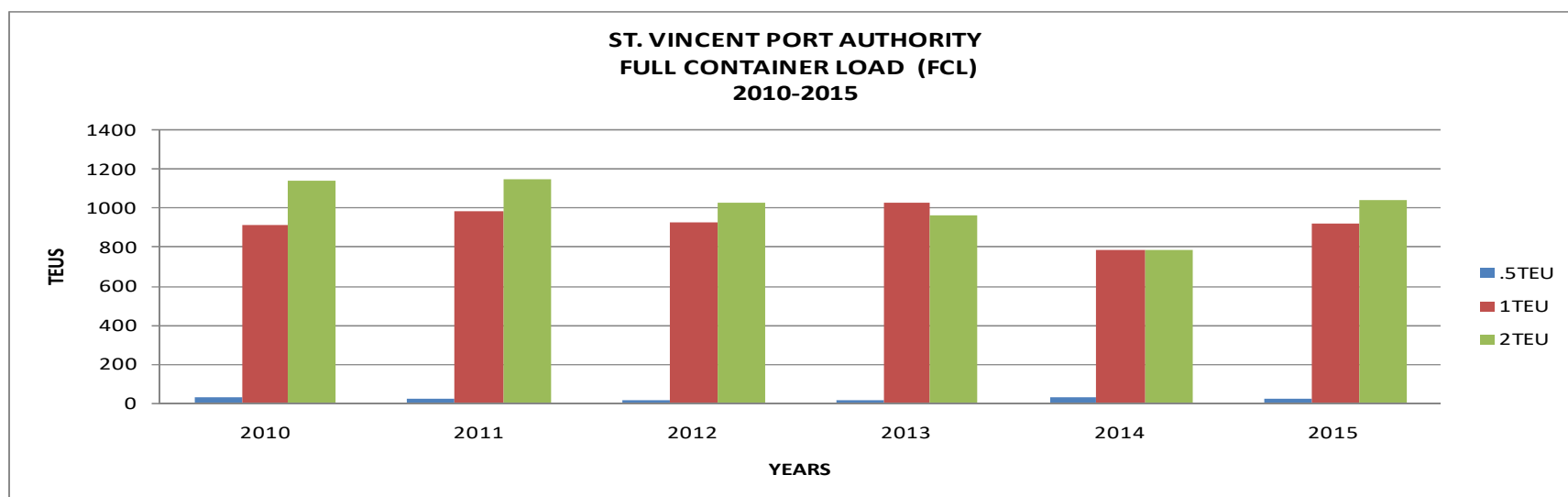
MONTH	2010				2011				2012			2013			2014				2015		
	TEU	2TEU	2.25	TOTAL TEUS	.5TEU	TEU	2TEU	TOTAL TEUS	TEU	2TEU	TOTAL TEUS	TEU	2TEU	TOTAL TEUS	0.5	TEU	2TEU	TOTAL TEUS	TEU	2TEU	TOTAL TEUS
January	15	23	0	61	0	16	29	74	23	24	71	19	29	77	1	18	30	76.5	18	24	66
February	10	33	0	76	0	14	36	86	16	32	80	17	28	73	1	25	25	70.5	21	27	75
March	17	37	1	93	0	9	39	87	19	36	91	13	35	83	0	18	27	70	14	32	78
April	15	39	0	93	0	18	38	94	13	38	89	12	27	66	0	25	38	93	21	34	89
May	15	53	1	123	0	21	37	95	18	44	106	17	30	77	0	19	31	76	19	33	85
June	12	45	3	109	0	17	48	113	22	33	88	10	39	88	0	30	44	108	19	45	109
July	15	46	1	109	0	14	34	82	12	36	84	11	45	101	0	20	41	95	19	45	109
August	14	46	4	115	0	14	36	86	16	32	80	22	30	82	0	17	38	87	15	40	95
September	12	40	3	99	0	19	41	101	18	29	76	10	30	70	0	25	37	89	24	33	90
October	17	43	0	103	0	26	49	124	15	38	91	16	42	100	0	32	42	113	16	49	114
November	19	54	0	127	0	15	43	101	24	61	146	22	37	96	0	21	49	107	15	62	139
December	23	101	4	234	1	18	70	158.5	22	129	280	17	5	10	0	30	185	385	24	133	290
TOTALS	184	560	17	1,342	1	201	500	1,202	218	532	1,282	186	377	923	2	280	587	1,370	225	557	1,339

**ST. VINCENT AND THE GRENADINES PORT AUTHORITY
LESS CONTAINER LOAD FOR 2010-2015**



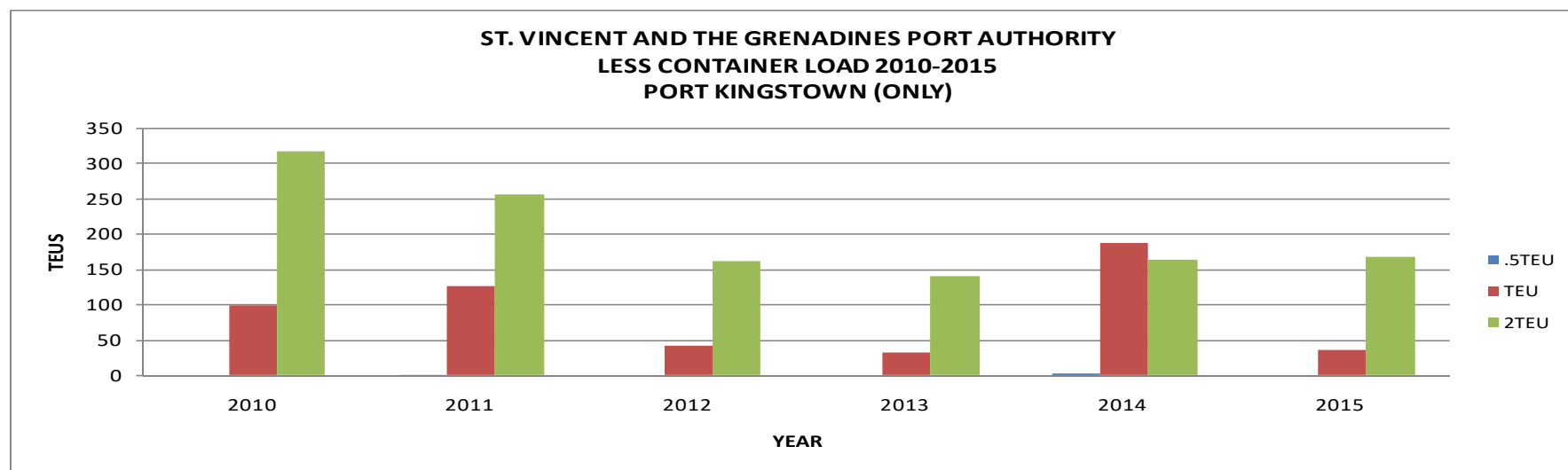
**ST. VINCENT AND THE GRENADINES PORT AUTHORITY
FULL CONTAINER LOAD (FCL)
2010 - 2015**

YEAR MONTH/ SIZE	2010			2011			2012			2013			2014			2015		
	10	20	40	10	20	40	10	20	40	10	20	40	10	20	40	10	20	40
JANUARY	1	65	100	1	59	76	2	77	78	0	55	70	1	58	57	5	24	26
FEBRUARY	2	83	80	2	66	80	2	88	78	0	57	52	1	66	39	2	60	72
MARCH	3	68	90	3	73	90	0	89	83	1	67	71	0	67	56	1	90	83
APRIL	2	60	93	2	79	87	3	61	78	4	88	88	1	69	57	3	86	77
MAY	3	71	105	2	83	79	3	82	75	2	115	104	2	76	70	3	75	91
JUNE	1	77	109	1	69	134	4	78	81	1	95	80	3	68	76	1	99	98
JULY	1	63	75	0	71	113	2	80	84	2	83	80	1	62	64	0	81	75
AUGUST	4	75	92	1	75	80	0	59	88	1	109	75	2	73	76	2	76	86
SEPTEMBER	3	60	59	4	82	86	0	65	67	2	67	90	4	49	59	2	73	102
OCTOBER	1	107	111	0	90	99	0	85	68	2	81	78	3	69	66	0	81	95
NOVEMBER	3	97	102	5	117	111	0	80	101	1	130	101	4	68	84	0	101	102
DECEMBER	2	85	120	2	114	112	0	79	141	0	77	68	3	59	77	1	73	130
TOTAL	26	911	1,136	23	978	1,147	16	923	1,022	16	1,024	957	25	784	781	20	919	1,037



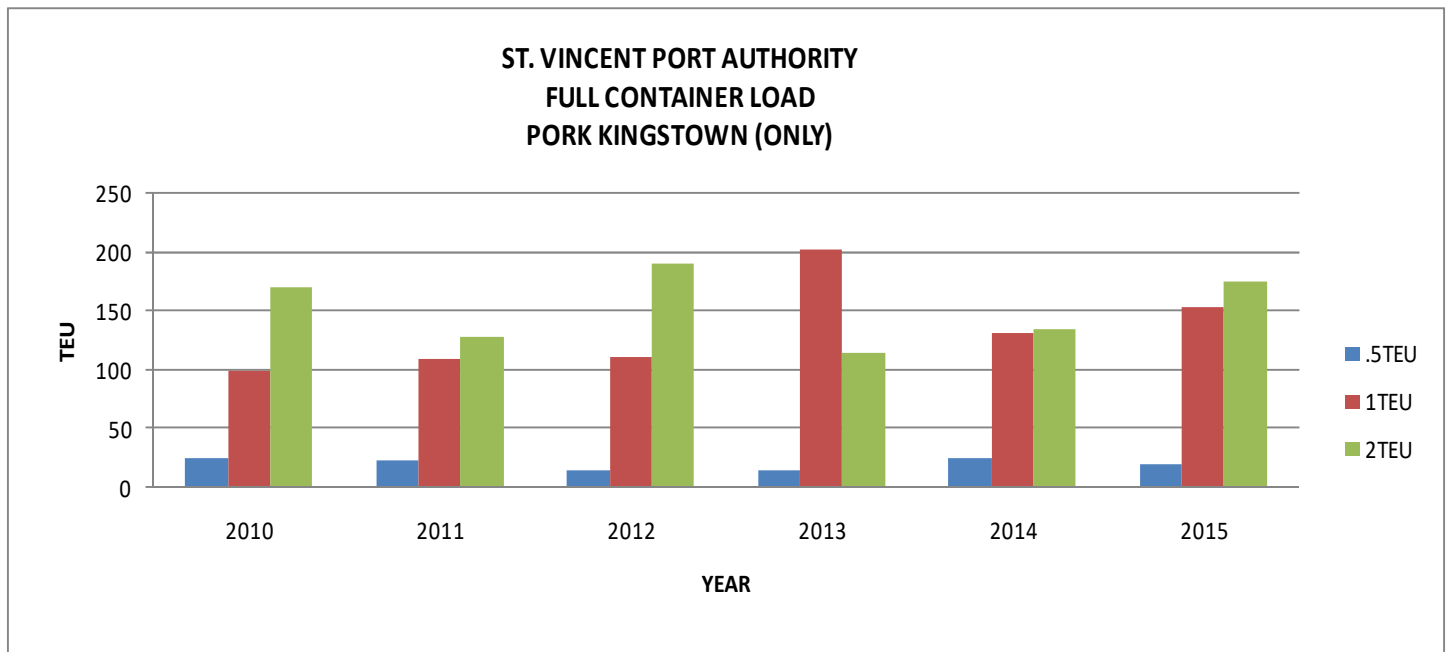
**ST. VINCENT AND THE GRENADINES PORT AUTHORITY
LESS CONTAINER LOAD STATISTICS FOR 2010-2015
PORT KINGSTOWN (ONLY)**

MONTH	2010			2011				2012			2013			2014				2015		
	TEU	2TEU	TOTAL TEUS	.5TEU	TEU	2TEU	TOTAL TEUS	TEU	2TEU	TOTAL TEUS	TEU	2TEU	TOTAL TEUS	.5TEU	TEU	2TEU	TOTAL TEUS	TEU	2TEU	TOTAL TEUS
January	9	10	29	-	5	13	31	7	5	17	5	10	25	1	16	5	26.5	1	6	13
February	5	21	47	-	4	20	44	0	2	4	4	3	10	1	20	6	32.5	1	6	13
March	9	18	45	-	4	20	44	1	2	5	2	4	10	0	16	2	20	2	5	12
April	7	19	45	-	10	21	52	2	6	14	2	2	6	0	17	10	37	1	8	17
May	8	34	76	-	11	20	51	2	14	30	1	8	17	0	14	5	24	2	9	20
June	5	24	53	-	13	34	81	2	3	8	0	7	14	0	20	13	46	1	9	19
July	7	24	55	-	12	23	58	2	9	20	2	12	26	0	13	8	29	4	11	26
August	4	25	54	-	8	18	44	1	8	17	2	5	2	0	11	7	25	4	6	16
September	6	21	48	-	13	22	57	3	6	15	0	0	0	0	15	10	35	2	8	18
October	10	24	58	-	21	31	83	1	12	25	1	10	21	0	21	12	45	3	8	19
November	11	30	71	-	11	17	45	6	23	52	2	14	30	0	9	14	37	2	18	38
December	18	67	152	1	14	16	46.5	14	72	158	10	64	138	0	15	71	148	13	73	159
TOTALS	99	317	733	1	126	255	636.5	41	162	365	31	139	299	2	187	163	505	36	167	370



**ST. VINCENT AND THE GRENADINES PORT AUTHORITY
FULL CONTAINER LOAD (FCL)
PORT KINGSTOWN**

MONTHS	2010			2011			2012			2013			2014			2015		
	10	20	40	10	20	40	10	20	40	10	20	40	10	20	40	10	20	40
JANUARY	1	5	10	1	11	13	2	9	14	0	8	8	1	5	9	5	8	8
FEBRUARY	2	7	11	2	8	9	2	9	7	0	14	0	1	14	4	2	7	17
MARCH	3	8	16	3	13	13	0	5	11	1	14	8	0	7	5	1	22	23
APRIL	2	6	18	2	7	12	3	8	8	4	19	12	1	13	7	3	16	16
MAY	3	6	15	2	12	15	3	6	7	2	37	14	2	6	10	3	17	15
JUNE	1	7	19	1	1	3	4	14	10	1	18	5	3	7	16	1	21	13
JULY	1	8	15	0	0	0	2	13	17	2	8	6	1	15	5	0	8	8
AUGUST	4	8	15	1	13	10	0	8	7	1	39	11	2	12	11	2	19	17
SETEMBER	3	7	10	4	5	11	0	14	7	2	10	15	4	9	17	2	6	15
OCTOBER	1	10	12	0	8	10	0	6	8	2	10	8	3	11	15	0	10	11
NOVEMBER	3	12	15	5	16	12	0	6	23	1	20	21	4	15	18	0	8	11
DECEMBER	2	15	14	2	15	20	0	14	72	0	6	7	3	18	18	1	11	21
TOTALS	26	99	170	23	109	128	16	112	191	16	203	115	25	132	135	20	153	175



St. Vincent and the Grenadines Port Authority realized a steady increase in container activity in the year 2015. Totals recorded were 18,621 teus and 254,329 container tonnage.

There was an increase in teus by 11.25% or 1,884 teus and also an increase in container tonnage by 5.52% or 13,298 tons. Total for the previous year were 16,737 teus and 241,031 container tonnage.

ST. VINCENT AND THE GRENADINES PORT AUTHORITY

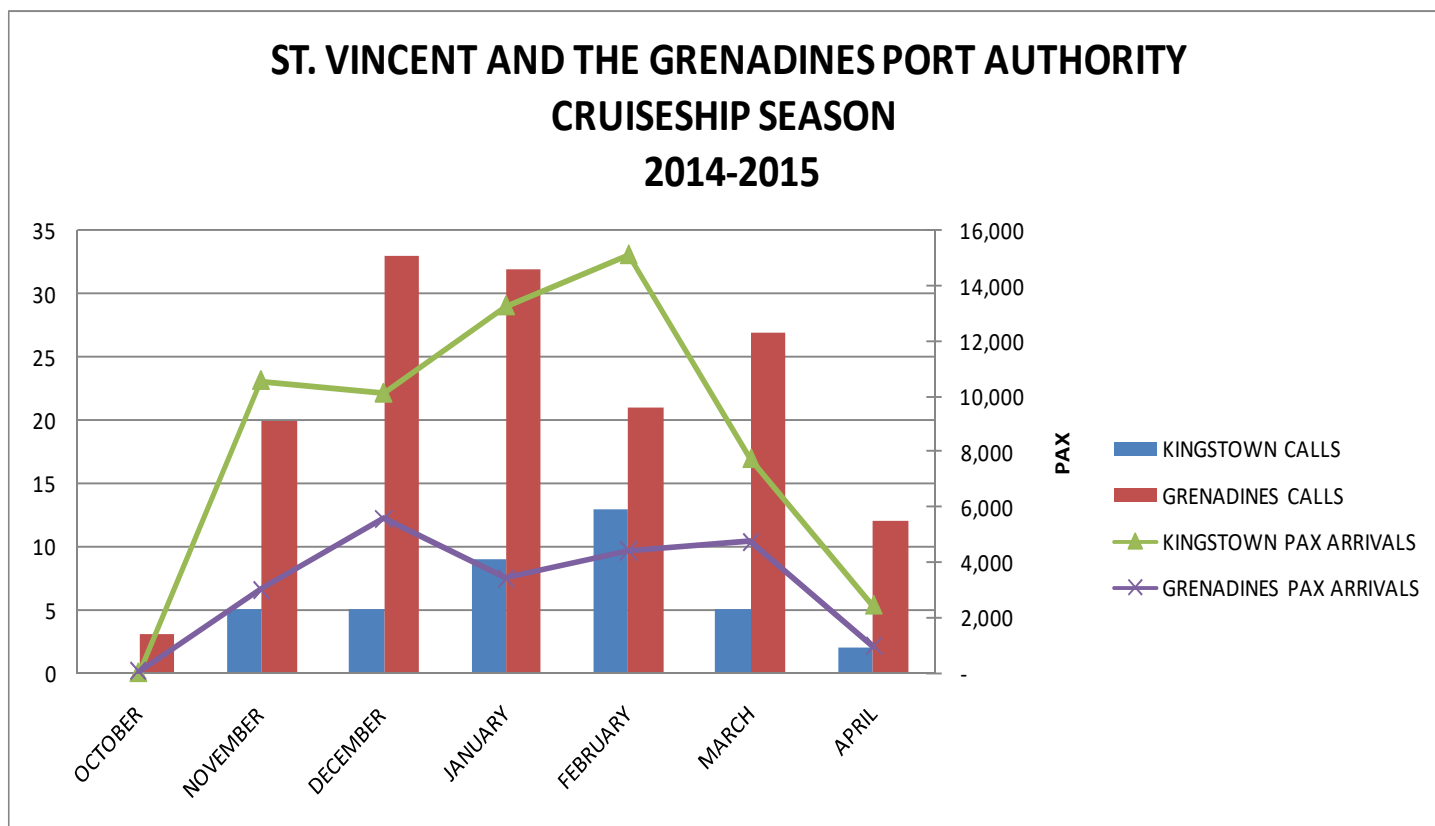
VESSEL STATISTICS BY TYPE 2015

TYPE OF VESSEL/ SHIP	TOTAL GROSS TONNAGE (GRT)	TOTAL NET TONNAGE (NRT)	AVERAGE GROSS TONNAGE	NUMBER OF VESSEL CALLS	LOCAL	FOREIGN
CARGO VESSELS: <i>OVER 100 TONS</i>	299,835	141,650	12,915	275	234	41
<i>UNDER 100 TONS</i>	-	-	-	-	-	-
	8,605	4,985	1,687	56	47	9
RO RO	-	-	-	-	-	-
	698,361	225,478	556,087	18	5	13
CONTAINER SHIPS	-	-	-	-	-	-
	1,821,455	815,076	112,419	195	52	143
TANKER	-	-	-	-	-	-
	388,113	171,573	53,671	87	-	87
REEFERS	-	-	-	-	-	-
	483,803	254,133	113,973	51	-	51
BARGE	-	-	-	-	-	-
	186	53	186	1	1	-
TUGS	-	-	-	-	-	-
	1,704	594	1,297	7	5	2
BULK CARRIERS	-	-	-	-	-	-
	59,946	24,357	59,946	5	-	5
CRUISE SHIPS	-	-	-	-	-	-
	1,980,833	1,163,469	265,615	55	-	55
	-	-	-	-	-	-
TOTALS	5,742,841	2,801,368	1,177,796	750	344	406

**ST. VINCENT AND THE GRENADINES
CRUISE SHIP SEASON
2014-2015**

MONTH	KINGSTOWN CALLS	GRENADINES CALLS	KINGSTOWN PAX ARRIVALS	GRENADINES PAX ARRIVALS	TOTAL PAX ARRIVALS	TOTAL CALLS
OCTOBER	0	3	-	70	70	3
NOVEMBER	5	20	10,579	3,016	13,595	25
DECEMBER	5	33	10,124	5,582	15,706	38
JANUARY	9	32	13,288	3,439	16,727	41
FEBRUARY	13	21	15,132	4,442	19,574	34
MARCH	5	27	7,755	4,760	12,515	32
APRIL	2	12	2,448	955	3,403	14
TOTAL	39	148	59,326	22,264	81,590	187

During the 2014/2015 Cruise Season, Port Kingstown recorded an increase in cruise calls by 8.7% (or 15 calls) and also an increase in cruise passengers by 2.9% or 2,289 passengers. Totals recorded were 187 cruise calls and 81,590 cruise passengers. A total of 39 calls and 59,326 passengers were recorded in Port Kingstown while 148 calls and 22,264 passengers were recorded in the Grenadines. The previous season (2013/2014) recorded a total of 172 cruise calls and 79,301 cruise passengers.



**ST. VINCENT AND THE GRENADINES PORT AUTHORITY
VEHICLE STATISTICS
2015**

DATE	NAME OF VESSEL	AGENT	SOURCE	No. of VEHICLES		Total
				RoRo	Container	
8/1/2015	Progress Ace	Coreas	Japan	43	3	46
8/2/2015	Apollan Leader	W.J Abott	Japan	75	6	81
6/3/2015	Eropean	Coreas	Japan	53	15	68
9/4/2015	Euphony Ace	Coreas	Japan	51	5	56
2/5/2015	Crones Leader	Coreas	Japan	105	13	118
5/6/2015	CSSC Asia	Coreas	Japan	85	17	102
7/7/2015	Freedom Ace	Coreas	Japan	119	0	119
7/8/2015	Talia	Coreas	Japan	72	10	82
5/9/2015	Genuis Highway	Coreas	Japan	47	9	56
10/10/2015	Swift Ace	Coreas	Japan	89	10	99
9/11/2015	Equilieus Leader	Coreas	Japan	58	10	68
8/12/2015	Atheus Highway	Coreas	Japan	95	5	100
Total				892	103	995

**ST. VINCENT AND THE GRENADINES PORT AUTHORITY
VEHICLE DATA 2015**

MAKE	NEW	USED	TOTAL
NISSAN	14	100	114
TOYOTA	26	414	440
SUZUKI	13	183	196
MAZDA	1	39	40
BMW	0	20	20
MITZIBISHI	0	11	11
HONDA	0	26	26
OMNINOVA	0	1	1
DAIHATSU	0	6	6
KIA	2	6	8
SUBARU	0	6	6
ISUZU	0	2	2
HINO	0	9	9
ROVER	0	1	1
KOREAN	1	0	1
FORD	0	1	1
CHEROKEE	0	1	1
VOLKSWAGEN	0	1	1
HYUNDAI	0	1	1
PENGEOT	0	1	1
PORSCHE	0	1	1
OTHER	0	108	108
TOTAL	57	938	995

ST. VINCENT AND THE GRENADINES PORT AUTHORITY
CRUISE SHIP ARRIVAL BY LINE/COMPANY
FOR YEAR 2015

NAMES OF CRUISE LINES	NO. OF CALLS	NO .OF PASSENGERS
CRUISE AMARITIME	1	948
DISCOVERY	1	390
COSTA CRUISES	1	2,936
FRED OLSEN	3	2,172
GEM STAR	1	254
CUNNARD/SEABOURN	12	2,510
STAR CLIPPER MONOCO	21	3,398
HOLLAND AMERICAN CRUISES	3	2,443
PRINCESS CRUISE LINE	1	661
SAGA SHIPPING	2	883
SEA CLOUD CRUISES	14	974
WIND & SEA	24	4,623
SILVER SEA CRUISES	10	2,125
SEA DREAM YACHT CLUB	17	1,580
MARCO POLO	1	737
LE PONANT CRUISES	16	949
P & O	15	21,691
HAPAG ALLOYD	1	433
FREEWINDS	4	452
WINDJAMMA	44	1,042
WEST INDIES CRUISES	7	590
PLAN TOUR	1	342
JEANS FOR FREEDOM	1	267
AIDA CRUISES	8	16,725
LOUIS CRUISES	10	12,338
V.SHIP PHOENIX	1	694
TOTAL	220	82,157

ST. VINCENT AND THE GRENADINES PORT AUTHORITY

BARREL STATISTICS

2010-2015

MONTH	2010	2011	2012	2013	2014	2015
JANUARY	763	1,195	543	1,591	1,230	1,714
FEBRUARY	672	722	1,155	758	1,038	731
MARCH	1,030	1,071	1,256	1,221	1,096	882
APRIL	1,172	1,464	1,376	744	1,547	1,407
MAY	1,858	1,796	1,521	1,499	1,258	1,702
JUNE	2,265	2,500	2,471	1,919	2,428	1,989
JULY	1,932	2,083	1,584	2,233	1,823	2,293
AUGUST	1,840	1,684	1,449	1,821	1,716	1,519
SEPTEMBER	1,797	1,602	1,598	1,578	1,774	1,736
OCTOBER	1,552	1,445	1,402	1,453	1,350	1,442
NOVEMBER	1,994	2,075	2,721	2,297	2,322	3,153
DECEMBER	10,810	13,063	11,327	11,066	13,642	10,766
TOTAL	27,685	30,700	28,403	28,180	31,224	29,334

Prepared by: St. Vincent and the Grenadines Port Authority
P.O. Box 1237, Upper Bay Street, Kingstown, St. Vincent, West Indies
Tel. #: 784-456-1830
Fax #: 784-456-2732
Email: portadmin@svgpa.com
Website: svgpa.com