

THE PORT OF PREFERENCE



# ST. VINCENT AND THE GRENADINES PORT AUTHORITY

## ANNUAL STATISTICAL PUBLICATION

2020



## TABLE OF CONTENT

	Page
<b>Foreword</b>	<b>i</b>
<b>Corporate Information</b>	<b>ii</b>
<b>Definition of Terms and Abbreviations</b>	<b>iii</b>
<b>Board of Directors</b>	<b>iv</b>
<b>Department Managerial Staff</b>	<b>v</b>
<b>Cargo Tonnage Statistics 2020</b>	<b>1-3</b>
<b>Container Statistics 2020</b>	<b>4-7</b>
<b>Tanker Calls and Fuel Data 2020</b>	<b>8</b>
<b>Barrel Statistics 2020</b>	<b>9</b>
<b>Vehicle Statistics 2020</b>	<b>10</b>
<b>Vessel Statistics 2020</b>	<b>11</b>
<b>Employee Training Program 2020</b>	<b>12</b>
<b>Cruise Ship Statistics 2020</b>	<b>13-14</b>
<b>Clarence Keizer Education Awards 2020</b>	<b>15</b>

## Corporate Information

**Name of Company:** St. Vincent and the Grenadines Port Authority

The St. Vincent and the Grenadines Port Authority (SVGPA) is responsible for the operation and administration of the Kingstown Deep Water Harbour, the nearby Campden Park Container Port (CPCP) and the Kingstown Cruise and Ferry Terminals.

Port Kingstown first began operations in September 1964 and is located in the capital city, Kingstown. The main quay is 900ft with additional 121ft of catwalk with a water dept alongside of 30ft. The Port handles both containerized and general cargo. The port also facilitates inter-island ferries and cruise ship services.

Campden Park Container Port is located just outside capital Kingstown, constructed in March 1993 at the Campden Park Industrial Estate. The Port is operated by the St. Vincent and the Grenadines Port Authority to specifically handle containers.

**Address:** St. Vincent and the Grenadines Port Authority, P.O. Box 1237, St. Vincent

**Mission Statement:** To provide a coordinated effective and efficient system of port facilities and services to the highest level of satisfaction of the general public thereby contributing to national development.

**Tel No.:** +784 456 1830

**Fax No.:** +784 456 2723

**Website.:** [www.svgpa.com](http://www.svgpa.com)

**Email address** [Portadmin@svgpa.com](mailto:Portadmin@svgpa.com)

**Contact person:** Mr. Bishen John

**Position:** Chief Executive Officer

**Approaches:** Kingstown Deep Water Harbour  
Location: Latitude: 13 9' 1" N, Longitude: 61 13'5" W  
Useful landmark: Fort Charlotte Signal Station

**Main Approach:** Red Cupola - Depth 100m, With 1.25 miles, length 0.7 miles

**Approaches:** Campden Park Container Port  
Location: Latitude: 13 10' 2" N, Longitude: 61 14' 9" W  
Useful landmark: Green flashing light on Questelles Point and red flashing light on the eastern side of Campden Park Bay.

**Main Approach:** Approach the port by entering from the center of the bay. There are no charted dangers to the approach.

**Business hours**

Mon-Fri:	0800 - 1600
Sat:	0800 - 1200
Closed:	Sunday and public holidays

## TERMS AND ABBREVIATIONS

<b>TEU</b>	-	Twenty-foot equivalent unit
<b>TONS (TONNAGE)</b>	-	A measurement equivalent to 2,000 lbs (American) or 2,240 lbs (English) or 35 cubic feet
<b>CONT. (CONTAINERIZED)</b>	-	Cargo shipped in containers
<b>TRANSHIPMENT</b>	-	The transferring of cargo from one mode of transport to another or the same mode at a Port, which is not the Port of final destination
<b>GRT</b>	-	Gross Registered Tonnage
<b>NRT</b>	-	Net Registered Tonnage
<b>BREAKBULK</b>	-	Cargo that is loosely shipped in a ship's hold and not in a container
<b>INBOUND</b>	-	Imported or incoming
<b>OUTBOUND</b>	-	Exported or outgoing
<b>THROUGHPUT</b>	-	The total volume in tonnage of import and export
<b>RORO</b>	-	Roll-on Roll-off Container
<b>PAX</b>	-	Passengers
<b>LCL</b>	-	Less Container Load

## **BOARD OF DIRECTORS**

Mr. Clayton Burgin - Chairman

Mr. Winston Davis - Deputy Chairman

Mrs. Sandy Peters - Ministry of Foreign Affairs

Mr. Edmond Jackson - Ministry of Finance

Mr. Andrew Woodroffe - Chamber of Industry and Commerce

Mrs. Yvette Pompey - National Security

Mr. Joel Providence - Shipping Representative

Mr. Verol Mc Dowall - Council Member

Mr. Frank Da Silva - Council Member

## **DEPARTMENT MANAGERIAL STAFF**

Mr. Bishen John - Chief Executive Manager

Mr. Carl James– Chief Operational Officer

Mrs. De-Aon Sayers - Personal Officer

Mr. Walwyn Nichols - Operations Officer

Mr. Ronald Joseph - Chief Pilot

Mr. Leslie Ferdinand - Manager Information Systems

Mr. Harvey Caine - Chief Surveillance Officer

PORT

STATISTICS

## CARGO TONNAGE STATISTICS

Total cargo tonnage for the year 2020 amounted to 461,782 ton; an increase of 0.04% over 2019 which reported 461,577 tons. The figures also revealed a (0.61)% decrease on imports and a 4.9% increase in exports when compared to the previous year. Pages (1-3) refers

### ST. VINCENT AND THE GRENADINES PORT AUTHORITY TOTAL CARGO THROUGHPUT 2011 - 2020

YEARS	IMPORTS	EXPORTS	TOTAL FLOW	%
				INCREASE / DECREASE
2011	345,165	60,132	405,297	(1.6)
2012	342,003	74,501	416,504	2.8
2013	335,491	73,805	409,296	(1.7)
2014	331,944	65,716	397,660	(2.8)
2015	365,169	66,602	431,771	8.6
2016	372,418	62,105	434,523	0.6
2017	395,543	57,595	453,138	4.3
2018	401,123	61,090	462,213	2.0
2019	406,595	54,982	461,577	(0.1)
2020	404,084	57,698	461,782	0.0

### ST. VINCENT AND THE GRENADINES PORT AUTHORITY TOTAL CARGO FLOW THROUGHPUT COMPARISON 2018 - 2020

PORT	2018		2019		2020	
	2018	% share	2019	% share	2020	% share
PORT KINGSTOWN	199,541	43	203,287	44	205,240	44
CAMPDEN PARK	261,203	57	258,290	56	256,541	56
<b>TOTAL</b>	<b>460,745</b>		<b>461,577</b>		<b>461,781</b>	



ST. VINCENT AND THE GRENADINES PORT AUTHORITY  
INBOUND

MONTHLY CARGO STATISTICS 2020

MONTH	REGIONAL				EXTRA REGIONAL							TOTALS	
	GEN.CARGO B'BULK	PAPER ROLLS	CEMENT	GEN.CARGO B'BULK	VEHICLES	LUMBER	FUEL	OTHER	CONT.	MTLY	YTD		
JANUARY	2,125	-	5,697	564	1,526	156	5,632		17,776	33,466	33,466		
FEBRUARY	870	-	1,763	154	380	-	7,176		17,715	28,068	61,523		
MARCH	2,251	-	6,408	52	2,262	761	6,995		17,623	36,363	97,876		
APRIL	1,046	-	3,304	27	1,389	484	4,953		21,167	32,370	130,246		
MAY	1,450	105	4,646	62	473	612	6,154	13	13,051	26,566	156,812		
JUNE	1,887	164	1,100	20	1,322	258	3,752	-	14,934	23,237	180,049		
JULY	2,263	59	9,077	110	1,433	355	7,767	-	21,388	42,432	222,481		
AUGUST	1,652	-	2,943	29	2,042	-	3,695	-	18,384	28,745	251,226		
SEPTEMBER	1,765	97	3,157	49	1,082	429	8,461	-	19,189	34,229	285,455		
OCTOBER	2,270	75	2,214	95	1,114	481	3,135	-	21,387	30,771	316,226		
NOVEMBER	1,644	115	4,660	60	1,740	701	8,464	-	22,230	39,614	355,839		
DECEMBER	2,070	93	4,701	104	1,648	674	6,972	20	31,963	48,245	404,084		
TOTAL	21,093	708	49,670	1,316	16,412	4,911	73,156	33	236,796	404,084			

ST. VINCENT AND THE GRENADINES PORT AUTHORITY  
OUTBOUND

MONTHLY CARGO THROUGHPUT 2020

MONTH	REGIONAL				EXTRA REGIONAL			TOTALS	
	GEN. CARGO B'BULK	LIVES STOCK	GEN. CARGO B'BULK	VEHICLE	CONT.	MTLY	YTD		
JANUARY	1,119	-	18	-	4,116	5,253	5,253		
FEBRUARY	544	-	1	-	3,887	4,432	9,685		
MARCH	524	-	19	-	4,305	4,848	14,534		
APRIL	469	-	-	-	4,936	5,405	19,939		
MAY	832	-	-	-	3,428	4,260	24,199		
JUNE	664	-	12	13	3,955	4,644	28,843		
JULY	691	-	23	-	4,625	5,339	34,182		
AUGUST	713	44	1	50	3,373	4,181	38,363		
SEPTEMBER	657	-	645	114	4,976	6,392	44,755		
OCTOBER	753	-	2	100	3,192	4,047	48,802		
NOVEMBER	708	-	-	12	3,571	4,291	53,093		
DECEMBER	551	50	28	-	3,976	4,605	57,698		
TOTAL	8,225	94	749	289	48,341	57,698			

ST. VINCENT AND THE GRENADINES PORT AUTHORITY  
INBOUND

MONTHLY CARGO THROUGHPUT – 2019

MONTH	REGIONAL				EXTRA REGIONAL							TOTALS	
	GEN.CARGO B'BULK	PAPER ROLLS	CEMENT	GEN.CARGO B'BULK	VEHICLES	LUMBER	FUEL	CONT.	MTLY	YTD			
JANUARY	1,198	251	1,102	28	1,363	442	5,786	15,099	25,269	25,269			
FEBRUARY	1,541	-	4,652	106	1,682	445	6,302	17,569	32,297	57,566			
MARCH	1,840	274	3,147	130	1,383	743	3,801	14,586	25,904	83,471			
APRIL	2,228	-	3,502	191	2,215	572	7,476	17,938	34,123	117,593			
MAY	1,124	18	6,130	102	1,905	258	5,555	19,379	34,471	162,065			
JUNE	2,264	244	3,319	122	1,970	479	5,963	17,713	32,074	184,138			
JULY	1,601	-	3,157	132	1,258	-	6,227	17,532	29,906	214,044			
AUGUST	2,112	-	3,266	101	1,538	346	6,617	19,911	33,882	247,936			
SEPTEMBER	1,865	-	9,157	144	2,071	624	5,462	16,279	35,602	283,538			
OCTOBER	2,234	-	1,666	219	1,213	411	6,891	26,367	38,700	322,238			
NOVEMBER	1,985	212	3,312	230	1,375	566	4,097	25,689	37,466	359,705			
DECEMBER	2,123	-	3,714	71	1,707	304	6,565	25,466	39,950	389,655			
TOTAL	22,115	999	46,024	1,576	19,681	5,190	70,542	233,528	399,655				

ST. VINCENT AND THE GRENADINES PORT AUTHORITY  
OUTBOUND

MONTHLY CARGO THROUGHPUT – 2019

MONTH	REGIONAL				EXTRA REGIONAL			TOTALS	
	GEN. CARGO B'BULK	LIVES STOCK	GEN. CARGO B'BULK	VEHICLE	CONT.	MTLY	YTD		
JANUARY	1,257	-	12	9	3,240	4,518	4,518		
FEBRUARY	1,222	68	5	-	3,970	5,265	9,783		
MARCH	1,124	-	-	-	3,173	4,297	14,080		
APRIL	1,161	60	5	-	4,040	5,265	19,345		
MAY	1,161	-	-	25	4,689	5,875	25,221		
JUNE	958	-	-	-	3,570	4,528	29,749		
JULY	936	-	-	-	3,704	4,640	34,389		
AUGUST	1,214	75	-	-	4,138	5,427	39,816		
SEPTEMBER	691	-	5	14	4,292	5,002	44,818		
OCTOBER	885	-	9	14	4,249	5,157	49,975		
NOVEMBER	989	-	-	101	5,337	6,427	56,402		
DECEMBER	690	-	-	-	3,998	4,688	61,090		
TOTAL	12,288	203	36	163	48,400	61,090			

**ST. VINCENT AND THE GRENADINES PORT AUTHORITY**

**INBOUND**

**MONTHLY CARGO TONNAGES STATISTICS BY TYPE - 2020**

**PORT KINGSTOWN**

MONTH	REGIONAL						EXTRA REGIONAL						TOTALS					
	GEN. CARGO B'BULK	PAPER ROLLS	STARCH	CEMENT	GEN. CARGO B'BULK	VEHICLES	LUMBER	FUEL	CONT.	MTLY	YTD	GEN. CARGO B'BULK	VEHICLES	LUMBER	FUEL	CONT.	MTLY	YTD
JANUARY	2,125			5,697	554	1,526	156	5,632	1,303	16,993	16,993							
FEBRUARY	870			1,763	154	380	-	7,176	1,735	12,078	29,071							
MARCH	2,251			6,408	52	2,262	761	6,995	1,122	19,851	48,922							
APRIL	1,046			3,304	27	1,369	484	4,953	1,837	13,040	61,962							
MAY	1,450			4,646	62	473	612	6,154	1,329	14,726	76,688							
JUNE	1,687			1,100	20	1,322	258	3,752	1,344	9,483	86,171							
JULY	2,263			9,077	110	1,433	254	7,767	1,954	22,858	109,030							
AUGUST	1,652			2,943	29	1,757	-	3,695	1,344	11,421	120,450							
SEPTEMBER	1,765	97		3,157	49	1,082	429	8,461	1,179	16,219	136,669							
OCTOBER	2,270			2,214	95	1,114	333	3,135	2,068	11,229	147,889							
NOVEMBER	1,644			4,660	80	1,732	688	8,464	1,756	19,004	166,903							
DECEMBER	2,070	93		4,701	104	1,645	660	6,972	5,278	21,542	188,445							
<b>TOTAL</b>	<b>21,093</b>	<b>191</b>	<b>20</b>	<b>49,670</b>	<b>1,316</b>	<b>16,116</b>	<b>4,635</b>	<b>73,156</b>	<b>22,248</b>	<b>188,445</b>								

**ST. VINCENT AND THE GRENADINES PORT AUTHORITY**

**OUTBOUND**

**MONTHLY CARGO TONNAGES STATISTICS BY TYPE 2020**

**PORT KINGSTOWN**

MONTH	REGIONAL			EXTRA REGIONAL			TOTALS					
	GEN. CARGO B'BULK	LIVES STOCK	GEN. CARGO B'BULK	VEHICLES	CONT.	MTLY	YTD	GEN. CARGO B'BULK	VEHICLES	CONT.	MTLY	YTD
JANUARY	1,119	0	18	0	580	1,717	1,717	1,717				
FEBRUARY	544	0	1	0	686	1,231	2,948	2,948				
MARCH	524	0	19	0	635	1,178	4,126	4,126				
APRIL	469	0	0	0	793	1,262	5,388	5,388				
MAY	832	0	0	0	485	1,317	6,705	6,705				
JUNE	664	0	12	13	379	1,068	7,773	7,773				
JULY	691	0	23	0	539	1,253	9,026	9,026				
AUGUST	713	44	1	50	522	1,330	10,356	10,356				
SEPTEMBER	657	0	645	114	1507	2,923	13,279	13,279				
OCTOBER	753	0	2	100	366	1,221	14,499	14,499				
NOVEMBER	708	0	0	12	443	1,163	15,662	15,662				
DECEMBER	551	50	28	0	504	1,133	16,795	16,795				
<b>TOTAL</b>	<b>8,225</b>	<b>94</b>	<b>749</b>	<b>289</b>	<b>7,438</b>	<b>16,795</b>						

**ST. VINCENT AND THE GRENADINES PORT AUTHORITY**

**INBOUND**

**MONTHLY CARGO TONNAGES STATISTICS BY TYPE -2020**

**CAMPDEN PARK CONTAINER PORT (CPCP)**

MONTH	REGIONAL				EXTRA REGIONAL				TOTALS			
	PAPER	VEHICLES	LUMBER	OTHER	CONT.	MTLY	YTD	GEN. CARGO B'BULK	VEHICLES	CONT.	MTLY	YTD
JANUARY	-	-	-	-	16,473	16,473	16,473					
FEBRUARY	-	-	-	-	15,981	15,981	32,453					
MARCH	-	-	-	-	16,502	16,502	48,955					
APRIL	-	-	-	-	19,330	19,330	68,284					
MAY	105	-	-	13	11,722	11,840	80,124					
JUNE	164	-	-	-	13,588	13,752	93,876					
JULY	59	-	101	-	19,414	19,574	113,450					
AUGUST	-	284	-	-	17,040	17,324	130,774					
SEPTEMBER	-	-	-	-	18,010	18,010	148,784					
OCTOBER	75	-	148	-	19,319	19,542	168,326					
NOVEMBER	115	8	13	-	20,474	20,610	188,936					
DECEMBER	-	3	14	-	26,685	26,702	215,638					
<b>TOTAL</b>	<b>518</b>	<b>295</b>	<b>276</b>	<b>13</b>	<b>214,536</b>	<b>215,638</b>						

**ST. VINCENT AND THE GRENADINES PORT AUTHORITY**

**OUTBOUND**

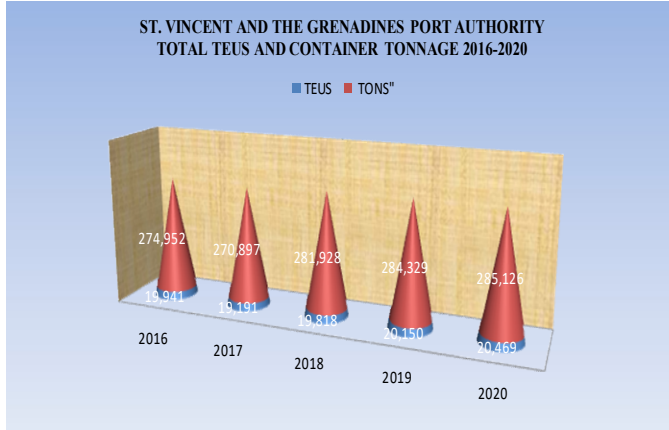
**MONTHLY CARGO TONNAGES STATISTICS BY TYPE - 2020**

**CAMPDEN PARK CONTAINER PORT (CPCP)**

MONTH	EXTRA REGIONAL		TOTALS	
	CONTAINER TONNAGE	MTLY	YTD	YTD
JANUARY	3,536	3,536	3,536	3,536
FEBRUARY	3,201	3,201	6,737	6,737
MARCH	3,670	3,670	10,408	10,408
APRIL	4,143	4,143	14,551	14,551
MAY	2,943	2,943	17,494	17,494
JUNE	3,576	3,576	21,070	21,070
JULY	4,086	4,086	25,156	25,156
AUGUST	2,851	2,851	28,007	28,007
SEPTEMBER	3,469	3,469	31,476	31,476
OCTOBER	2,826	2,826	34,302	34,302
NOVEMBER	3,128	3,128	37,430	37,430
DECEMBER	3,472	3,472	40,902	40,902
<b>TOTAL</b>	<b>40,902</b>	<b>40,902</b>		

**ST. VINCENT AND THE GRENADINES PORT AUTHORITY  
TOTAL TEUS AND CONTAINER TONNAGE  
2019-2020**

	2016	2017	2018	2019	2020	% GROWTH
TEUS	19,941	19,191	19,818	20,150	20,469	1.58
CONTAINER TONNAGE	274,952	270,897	281,928	284,329	285,126	0.28



Container traffic for the year 2020 amounted to 20,469 TEUs and 285,126 tons; an increase of 1.58% and 0.28% respectively when compared to the 2019 data. Container activity saw a total of 13,495 boxes being handled, with 6,724 landing and 6,771 boxes being loaded. Pages 4-6 refers

**ST. VINCENT AND THE GRENADINES PORT AUTHORITY  
CONTAINER TRAFFIC (2019 – 2020)**

MONTH	TEUS		GROWTH/DECLINE		CONT. TONNAGE		GROWTH/ DECLINE	
	2019	2020	ACTUAL	%	2019	2020	ACTUAL	%
<b>1<sup>ST</sup> QUARTER</b>								
JANUARY	1,453	1,910	457	31.45	18,617	21,892	3,275	17.59
FEBRUARY	1,559	1,618	59	3.78	19,202	21,603	2,401	12.50
MARCH	1,338	1,628	290	21.67	18,534	21,929	3,394	18.31
<b>QRTLY TOTAL</b>	<b>4,350</b>	<b>5,156</b>	<b>806</b>	<b>18.53</b>	<b>56,352</b>	<b>65,423</b>	<b>9,071</b>	<b>16.10</b>
<b>2<sup>nd</sup> QUARTER</b>								
APRIL	1,607	1,873	266	16.55	23,452	26,102	2,651	11.30
MAY	1,926	1,280	(646)	(33.54)	27,070	16,479	(10,591)	(39.13)
JUNE	1,463	1,387	(76)	(5.19)	22,160	18,889	(3,271)	(14.76)
<b>QRTLY TOTAL</b>	<b>4,996</b>	<b>4,540</b>	<b>(456)</b>	<b>(9.13)</b>	<b>72,682</b>	<b>61,470</b>	<b>(11,212)</b>	<b>(15.43)</b>
<b>3<sup>rd</sup> QUARTER</b>								
JULY	1,793	1,876	83	4.63	22,156	25,993	3,837	17.32
AUGUST	1,498	1,405	(93)	(6.21)	18,281	21,758	3,476	19.02
SEPTEMBER	1,437	1,939	502	34.93	21,034	24,164	3,130	14.88
<b>QRTLY TOTAL</b>	<b>4,728</b>	<b>5,220</b>	<b>492</b>	<b>10.41</b>	<b>61,471</b>	<b>71,915</b>	<b>10,444</b>	<b>16.99</b>
<b>4<sup>th</sup> QUARTER</b>								
OCTOBER	1,990	1,716	(274)	(13.77)	30,303	24,578	(5,725)	(18.89)
NOVEMBER	2,135	1,567	(568)	(26.60)	32,666	25,801	(6,865)	(21.02)
DECEMBER	1,951	2,270	319	16.35	30,855	35,939	5,084	16.48
<b>QRTLY TOTAL</b>	<b>6,076</b>	<b>5,553</b>	<b>(523)</b>	<b>(8.61)</b>	<b>93,824</b>	<b>86,318</b>	<b>(7,506)</b>	<b>(8.00)</b>
<b>Y-T-D</b>	<b>20,150</b>	<b>20,469</b>	<b>319</b>	<b>1.58</b>	<b>284,329</b>	<b>285,126</b>	<b>797</b>	<b>0.28</b>

**ST. VINCENT AND THE GRENADINES PORT AUTHORITY  
MONTHLY CONTAINER ACTIVITY 2020**

**INBOUND/OUTBOUND**

MONTH		DOMESTIC						TOTALS						LANDED/LOADED		TONNAGE
		10FT		20FT		40FT		10FT		20FT		40FT		BOXES	TEUS	
		MT	F	MT	F	MT	F	MT	F	MT	F	MT	F			
<b>JANUARY</b>	IN	-	-	29	252	2	228	-	-	29	252	2	228	511	741.0	17,775
	OUT	-	-	193	120	396	32	-	-	193	120	396	32	741	1,169.0	4,116
<b>FEBRUARY</b>	IN	-	-	78	205	-	244	-	-	78	205	-	244	527	771.0	17,715
	OUT	-	-	203	128	229	29	-	-	203	128	229	29	589	847.0	3,887
<b>MARCH</b>	IN	-	-	89	199	-	250	-	-	89	199	-	250	538	788.0	17,623
	OUT	-	-	128	136	251	37	-	-	128	136	251	37	552	840.0	4,305
<b>APRIL</b>	IN	-	-	91	220	1	310	-	-	91	220	1	310	622	933.0	21,167
	OUT	-	-	185	151	258	44	-	-	185	151	258	44	638	940.0	4,936
<b>MAY</b>	IN	-	-	65	134	-	216	-	-	65	134	-	216	415	631.0	13,051
	OUT	-	-	113	112	187	25	-	-	113	112	187	25	437	649.0	3,428
<b>JUNE</b>	IN	-	-	83	165	-	225	-	-	83	165	-	225	473	698.0	14,933
	OUT	-	-	103	120	202	31	-	-	103	120	202	31	456	689.0	3,955
<b>JULY</b>	IN	-	-	73	258	5	313	-	-	73	258	5	313	649	967.0	21,368
	OUT	-	-	148	153	276	28	-	-	148	153	276	28	605	909.0	4,625
<b>AUGUST</b>	IN	-	-	25	214	-	265	-	-	25	214	-	265	504	769.0	18,384
	OUT	-	-	132	112	176	20	-	-	132	112	176	20	440	636.0	3,373
<b>SEPTEMBER</b>	IN	-	-	66	224	-	284	-	-	66	224	-	284	574	858.0	19,189
	OUT	-	4	173	160	311	62	-	4	173	160	311	62	710	1,081.0	4,976
<b>OCTOBER</b>	IN	-	-	43	231	-	316	-	-	43	231	-	316	590	906.0	21,387
	OUT	-	-	156	102	250	26	-	-	156	102	250	26	534	810.0	3,191
<b>NOVEMBER</b>	IN	-	-	27	175	-	355	-	-	27	175	-	355	557	912.0	22,230
	OUT	-	-	115	120	184	26	-	-	115	120	184	26	445	655.0	3,571
<b>DECEMBER</b>	IN	-	-	35	234	-	495	-	-	35	234	-	495	764	1,259.0	31,963
	OUT	-	-	95	142	360	27	-	-	95	142	360	27	624	1,011.0	3,976
<b>TOTAL</b>	IN	-	-	704	2,511	8	3,501	-	-	704	2,511	8	3,501	6,724	10,233	236,786
	OUT	-	4	1,744	1,556	3,080	387	-	4	1,744	1,556	3,080	387	6,771	10,236	48,341
<b>Grand Total</b>		-	4	2,448	4,067	3,088	3,888	-	4	2,448	4,067	3,088	3,888	13,495	20,469	285,126

**ST. VINCENT AND THE GRENADINES PORT AUTHORITY  
MONTHLY CONTAINER ACTIVITY 2019**

**INBOUND/OUTBOUND**

MONTH		DOMESTIC						TOTALS						LANDED/LOADED		TONNAGE
		10FT		20FT		40FT		10FT		20FT		40FT		BOXES	TEUS	
		MT	F	MT	F	MT	F	MT	F	MT	F	MT	F			
<b>JANUARY</b>	IN	-	-	70	145	-	222	-	-	70	145	-	222	437	659.0	14,413
	OUT	1	1	104	149	238	32	1	1	104	149	238	32	525	794.0	4,204
<b>FEBRUARY</b>	IN	-	-	64	174	-	233	-	-	64	174	-	233	471	704.0	15,592
	OUT	-	-	117	114	271	41	-	-	117	114	271	41	543	855.0	3,610
<b>MARCH</b>	IN	-	-	45	190	1	251	-	-	45	190	1	251	487	739.0	15,552
	OUT	-	-	121	88	172	23	-	-	121	88	172	23	404	599.0	2,982
<b>APRIL</b>	IN	-	4	54	214	4	312	-	4	54	214	4	312	588	902.0	19,538
	OUT	-	-	121	130	189	38	-	-	121	130	189	38	478	705.0	3,914
<b>MAY</b>	IN	-	-	44	269	1	338	-	-	44	269	1	338	652	991.0	22,541
	OUT	-	-	152	139	277	45	-	-	152	139	277	45	613	935.0	4,528
<b>JUNE</b>	IN	-	-	46	166	1	283	-	-	46	166	1	283	496	780.0	18,465
	OUT	-	-	98	127	205	24	-	-	98	127	205	24	454	683.0	3,695
<b>JULY</b>	IN	-	-	78	211	-	262	-	-	78	211	-	262	551	813.0	18,100
	OUT	-	-	110	136	320	47	-	-	110	136	320	47	613	980.0	4,056
<b>AUGUST</b>	IN	-	-	45	189	-	240	-	-	45	189	-	240	474	714.0	15,065
	OUT	-	-	112	116	250	28	-	-	112	116	250	28	506	784.0	3,216
<b>SEPTEMBER</b>	IN	-	-	52	227	1	246	-	-	52	227	1	246	526	773.0	17,923
	OUT	-	-	131	121	176	30	-	-	131	121	176	30	458	664.0	3,111
<b>OCTOBER</b>	IN	-	-	25	313	-	344	-	-	25	313	-	344	682	1,026.0	25,586
	OUT	-	-	162	166	283	35	-	-	162	166	283	35	646	964.0	4,717
<b>NOVEMBER</b>	IN	-	-	49	281	-	415	-	-	49	281	-	415	745	1,160.0	28,268
	OUT	-	-	191	154	289	26	-	-	191	154	289	26	660	975.0	4,398
<b>DECEMBER</b>	IN	-	-	60	247	-	411	-	-	60	247	-	411	718	1,129.0	27,504
	OUT	-	-	118	120	271	21	-	-	118	120	271	21	530	822.0	3,351
<b>TOTAL</b>	IN	-	4	632	2,626	8	3,557	-	4	632	2,626	8	3,557	6,827	10,390	238,545
	OUT	1	1	1,537	1,560	2,941	390	1	1	1,537	1,560	2,941	390	6,430	9,760	45,784
<b>Grand Total</b>		1	5	2,169	4,186	2,949	3,947	1	5	2,169	4,186	2,949	3,947	13,257	20,150	284,329

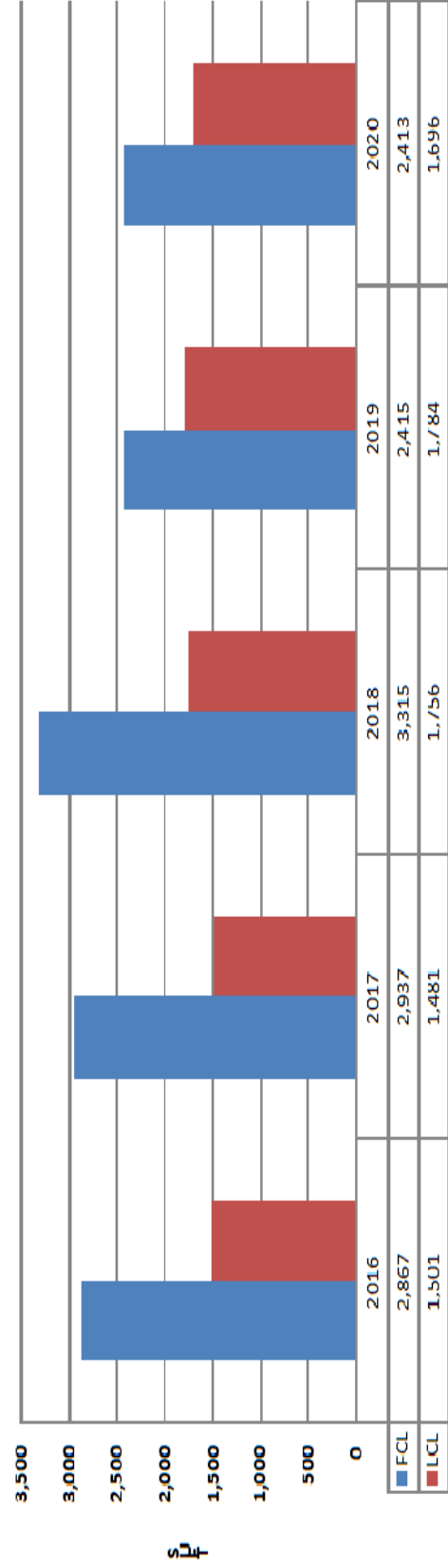
**ST. VINCENT AND THE GRENADINES PORT AUTHORITY  
DESTUFFING STATISTICS FOR 2016-2020**

**FULL CONTAINER LOADS (FCL) AND LESS CONTAINER LOADS (LCL)**

MONTH	2016			2017			2018			2019			2020		
	FCL	LCL	TOTAL TEU	FCL	LCL	TOTAL TEU	FCL	LCL	TOTAL TEU	FCL	LCL	TOTAL TEU	FCL	LCL	TOTAL TEU
January	195	95	290	202	94	296	380	144	524	233	134	367	141	116	257
February	225	87	312	201	83	284	364	74	438	148	105	253	175	115	290
March	296	114	410	286	118	404	237	118	355	235	103	338	180	119	299
April	250	92	342	250	97	347	245	114	359	198	134	332	211	98	309
May	281	104	385	290	112	402	271	141	412	208	125	333	206	64	270
June	243	127	370	246	124	370	289	190	479	205	138	343	130	98	228
July	220	108	328	223	107	330	223	150	373	167	131	298	235	135	370
August	265	105	370	273	100	373	251	132	383	228	136	364	171	159	330
September	231	83	314	228	82	310	208	102	310	116	124	240	225	139	364
October	291	118	409	265	111	376	241	139	380	128	125	253	186	140	326
November	242	124	366	277	138	415	342	231	573	282	152	434	221	166	387
December	128	344	472	196	315	511	267	221	488	267	377	644	332	347	679
<b>TOTALS</b>	<b>2,867</b>	<b>1,501</b>	<b>4,368</b>	<b>2,937</b>	<b>1,481</b>	<b>4,418</b>	<b>3,315</b>	<b>1,756</b>	<b>5,071</b>	<b>2,415</b>	<b>1,784</b>	<b>4,199</b>	<b>2,413</b>	<b>1,696</b>	<b>4,109</b>

**ST. VINCENT AND GRENADINES PORT AUTHORITY  
DESTUFFING STATISTICS FOR YEARS 2016-2020**

**FULL CONTAINER LOAD (FCL) AND LESS CONTAINER LOAD (LCL)**





Fuel Tanker  
Tracey Kosan

### ST. VINCENT AND THE GRENADINES PORT AUTHORITY TANKER CALLS AND FUEL DATA 2020

MONTHS	2020						2019			
	LOWMANS BAY		GREAT HEAD BAY		GRENADINES		TOTAL CALLS	TOTAL TONNAGE	TOTAL CALLS	TOTAL TONNAGE
JANUARY	-	-	11	5,632	-	-	11	5,632	7	3,685
FEBRUARY	1	1,567	9	5,209	2	400	12	7,176	16	7,619
MARCH	-	-	8	6,995	-	-	8	6,995	14	8,039
APRIL	1	1,212	8	3,384	2	357	11	4,953	13	6,063
MAY	-	-	10	5,696	4	458	14	6,154	9	4,770
JUNE	-	-	8	3,752	-	-	8	3,752	12	5,889
JULY	1	1,354	9	6,413	-	-	10	7,767	12	7,344
AUGUST	-	-	6	3,389	2	306	8	3,695	10	4,809
SEPTEMBER	-	-	11	7,550	2	911	13	8,461	11	5,968
OCTOBER	-	-	6	3,135	-	-	6	3,135	12	6,124
NOVEMBER	-	-	10	7,847	4	617	14	8,464	16	8,244
DECEMBER	1	1,333	10	5,101	4	538	15	6,972	9	5,507
TOTALS	4	5,466	106	64,103	20	3,587	130	73,156	141	74,061

**ST. VINCENT AND THE GRENADINES PORT  
AUTHORITY  
BARREL STATISTICS 2016-2020**



**ST. VINCENT AND THE GRENADINES PORT AUTHORITY  
BARREL STATISTICS BY AGENT 2020**

<b>NAME OF AGENTS</b>	<b>KINGSTOWN</b>	<b>CPCP</b>	<b>TOTAL</b>
ARABESQUE	14,461	23	14,484
WILLS AGENCY	332	183	515
ALLIANCE	656	0	656
SQUARE DEAL SHIPPERS	464	838	1,302
TROPICAL	0	4,414	4,414
GENERAL AND MARITIME	89	0	89
PREMIER LOGISTICS SERVICES	320	0	320
TRANS OCEAN	0	289	289
SEA PACK	0	118	118
CARIB TRANS	0	1,667	1,667
COREAS	84	1,210	1,294
STANDARD CARIBBEAN	176	4,614	4,790
COX AND RICHARDS	1,368	21	1,389
ISLANDWIDE	126	0	126
J&J SHIPPING	3	0	3
STANDARD SHIPPERS	2,578	116	2,694
KBB SHIPPING	186	0	186
SAP SHIPPING	5	0	5
A&A SHIPPING	371	12	383
CLM AGENCIES	455	0	455
GLOBAL LINKS	44	0	44
HARRY'S SHIPPING	99	5	104
MAJESTIC	479	165	644

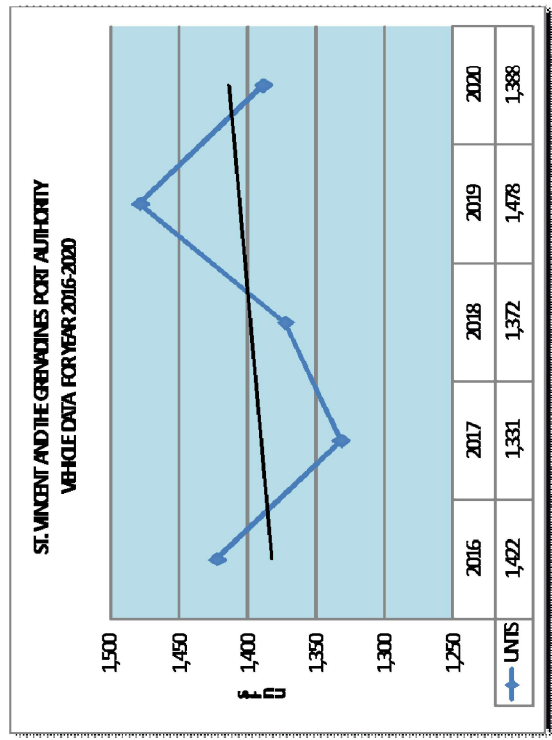


**ST. VINCENT AND THE GRENADINES PORT AUTHORITY  
VEHICLE DATA BY MAKE 2020**

MAKE	NEW	USED	TOTAL
NISSAN	15	299	314
TOYOTA	9	421	430
SUZUKI	3	358	361
MAZDA		27	27
HINW		14	14
MINI	1	10	11
HONDA		33	33
DAIHATSU		5	5
MA	1	6	7
SUBARU		15	15
ISUZU		8	8
HINO		12	12
LAND ROVER			0
FORD		10	10
VOLKSWAGEN		4	4
HYUNDAI		18	18
MERCEDES BENZ		6	6
ALFA		14	14
CHEVROLET		2	2
JAGUAR		2	2
DODGE		6	6
JEEP		1	1
LEXUS		10	10
FIRE TRUCKS		1	1
GOLF CARTS		1	1
YAMAHA	8		8
BMW EXC100		3	3
CATERPILAR		1	1
CV743 TRUCK		1	1
CRUSHING PLANT		1	1
CRUSHING SCREENING PLANT		1	1
HYDRAULIC CONCRETE MIXER		2	2
HYDRAULIC EXCAVATOR		2	2
TRACTOR		2	2
MACK		2	2
CHEVY		2	2
MOTOR CYCLE	1		1
TRUCK		1	1
WRANGLER		1	1
TCM		1	1
LINCOLN		1	1
TEREX		1	1
KOMATSU		1	1
BOB CAT		1	1
AL TEC		1	1
MONDALHY		1	1
JCB		1	1
KAWASAKI		1	1
VOLVO FLATBED TRUCK		1	1
SCAMIA		1	1
ATN		1	1

**ST. VINCENT AND THE GRENADINES PORT AUTHORITY  
VEHICLE STATISTICS 2016-2020**

Month	YEARS				
	2016	2017	2018	2019	2020
January	106	92	97	59	136
February	90	94	111	131	39
March	156	100	85	173	137
April	140	108	162	141	134
May	146	160	140	154	43
June	134	124	113	133	118
July	153	132	92	120	122
August	107	86	125	111	132
September	102	94	143	124	95
October	92	122	92	108	116
November	93	110	98	46	149
December	103	109	114	178	167

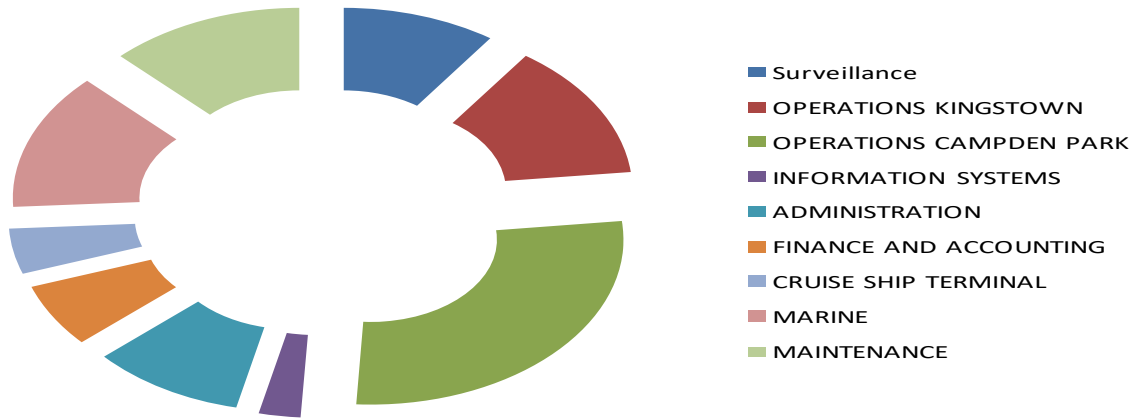


**ST. VINCENT AND THE GRENADINES PORT AUTHORITY**

**VESSEL STATISTICS BY TYPE**

		2020				2019			
<b>TYPE OF VESSEL/ SHIP</b>	<b>TOTAL GROSS TONNAGE (GRT)</b>	<b>NUMBER OF VESSEL CALLS</b>	<b>LOCAL</b>	<b>FOREIGN</b>	<b>NUMBER OF VESSEL CALLS</b>	<b>LOCAL</b>	<b>FOREIGN</b>		
<b>CARGO VESSELS:</b>									
OVER 100 TONS	215,638	291	162	55	291	209	82		
UNDER 100 TONS	74,297	59	79	15	59	43	16		
<b>RO RO</b>	754,367	22	1	24	22	0	22		
<b>CONTAINER SHIPS</b>	2,026,511	193	57	168	193	55	138		
<b>TANKER</b>	486,342	109	0	122	109	0	109		
<b>REEFERS</b>	639,976	47	0	49	47	0	47		
<b>BARGE</b>	15,506	7	1	1	7	2	5		
<b>TUGS</b>	2,716	13	3	3	13	9	4		
<b>BULK CARRIERS</b>	103,414	5	0	4	5	0	5		
<b>CRUISE SHIPS</b>	3,876,925	52	5	90	52	2	50		
<b>TOTALS</b>	<b>8,195,692</b>	<b>798</b>	<b>308</b>	<b>531</b>	<b>798</b>	<b>320</b>	<b>478</b>		

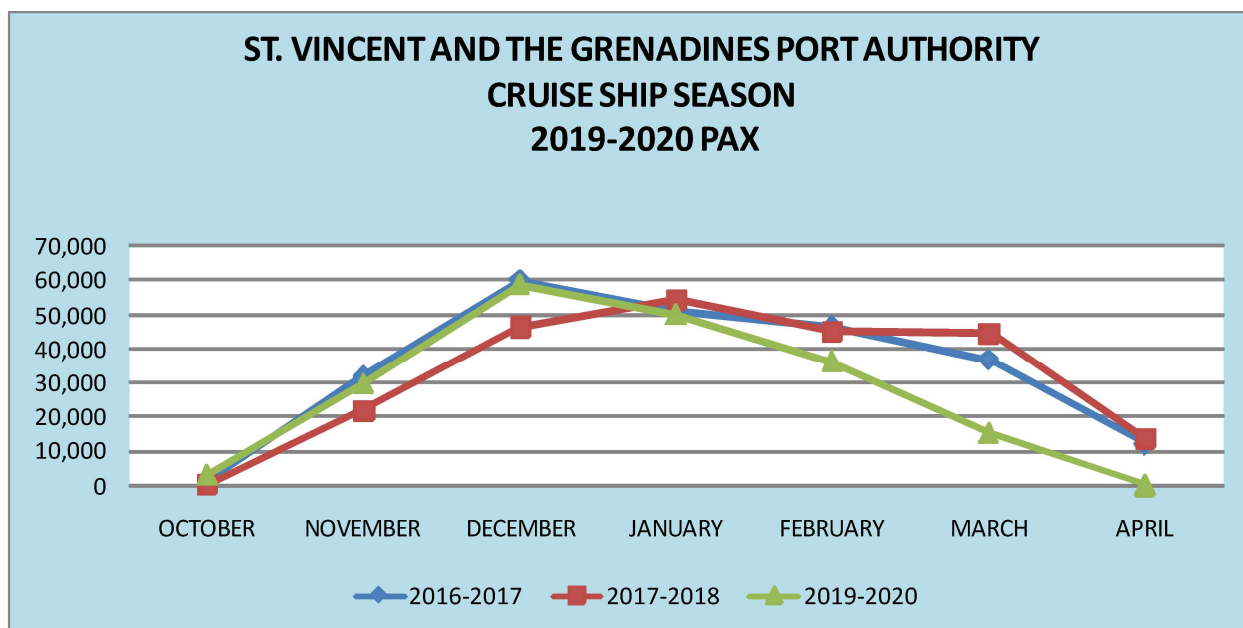
**ST.VINCENT AND THE GRENADINES PORT AUTHORITY  
EMPLOYEE TRAINING PROGRAM**



AREA OF TRAINING	NUMBER OF PARTICIPANTS
Container Handling Unit	22
Resilient Urban Development	2
Emergency Response Planning	3
Defensive Driving	1
ASYCUDA WORLD UPGRADW	3
Port Security Assessment Plan	2
CPR & First Aid	9
Unitrack	3
Hydraulics Basics	1
Health and Safety	7
OAS/CIP Cruise Port Security	3
Electro-Hydraulics Advanced	1
Mipa Demo Auto Paint Workshop	3
Zdrive Training	5
Fire Warden/Marshall Training	5
Crown and Crisis Management	26
UN Security Council Workshop	1
Maritime Cyber Risk	2
Financial Literacy	1
Ship Registry	2
Gender & Vulnerability in EWS	2
IALA Aton Workshop	1
Combating Illegal Trade	5
Fidic Training	1
Maritime Public Leaders' Program	1

**ST. VINCENT AND THE GRENADINES PORT AUTHORITY  
CRUISE SHIP SEASON  
2017-2020**

MONTH	CALLS	CALLS	CALLS	%growth	PAX-ARRIVALS	PAX-ARRIVALS	PAX-ARRIVALS	%growth
	2017-2018	2018-2019	2019-2020		2016-2017	2017-2018	2019-2020	
OCTOBER	6	8	6	(25)	1,017	177	3,174	1,693
NOVEMBER	48	21	24	14	31,808	21,892	29,844	36
DECEMBER	66	44	51	16	59,877	46,533	58,905	27
JANUARY	51	49	48	(2)	51,147	54,405	49,956	(8)
FEBRUARY	40	42	32	(24)	46,465	45,082	36,396	(19)
MARCH	48	57	17	(70)	36,747	44,681	15,227	(66)
APRIL	11	15	0	(100)	12,021	13,556	0	(100)
<b>TOTAL</b>	<b>218</b>	<b>236</b>	<b>178</b>	<b>(24.6)</b>	<b>121,176</b>	<b>226,326</b>	<b>193,502</b>	<b>(14.5)</b>



**ST. VINCENT AND THE GRENADINES PORT AUTHORITY  
CRUISE SHIP SEASON  
KINGSTOWN AND THE GRENADINES 2019-2020**

PORTS OF CALL	NO OF CALLS	NO OF PAX
KINGSTOWN	73	167,510
BEQUIA	64	17,948
UNION	39	8,001
CANOUAN	2	43
<b>TOTAL</b>	<b>178</b>	<b>193,502</b>

The 2019-2020 cruise season was severely impacted by the Covid –19 pandemic and saw the arrival of 193,502 passengers with 178 calls; a decline over the 2018-2019 season of 14.5% and 24.6 % respectively. Pages 12&13 refers:

**ST. VINCENT AND THE GRENADINES PORT AUTHORITY**  
**CRUISE SHIP SEASON**  
**2019-2020**

<b>CRUISE SHIPS</b>	<b>CALLS</b>	<b>PAX</b>
<b>SHIPS UNDER 250 METERS</b>		
WINDSURF	1	382
AMERA	1	549
LE CHAMPLAIN	7	1,077
HAMBURG	1	279
REVIERRA	2	2,387
LIBERTY	2	747
STAR PRIDE	3	590
MANDALAY	18	382
SEA CLOUD	8	459
SEA CLOUD 2	1	69
ROYAL CLIPPER	15	2,955
CLUB MED 2	9	2,353
SEABOURNE ODYSSEY	11	4,785
SEABOURNE SOJOURN	3	1,325
SEADREAM 1	7	651
STAR FLYER	1	147
SAQGA SAPPHIRE	1	652
LE DEMONT	5	615
STAR LEGEND	6	1,164
FREE WINDS	9	894
SILVER WHISPER	1	285
SILVER SHADOW	1	363
SILVER WIND	1	218
<b>SUBTOTAL</b>	<b>114</b>	<b>23,328</b>
<b>SHIPS OVER 250 METERS</b>		
BRITANNIA	8	28,902
AIDA PEARLA	9	30,326
PREZIOSA	7	26,327
VENTURA	1	2,394
CELEBRITY SILHOUETTE	3	8,541
CELEBRITY SUMMIT	2	4,388
PACIFIC PRINCESS	1	643
KONINHDAM	1	2,831
AURORA	1	1,756
AZURA	6	18,471
MARELLA CELEBRATION	7	8,824
MARELLA EXPLORER	13	22,725
COSTA MAGICA	5	14,046
<b>SUBTOTAL</b>	<b>64</b>	<b>170,174</b>
<b>GRAND TOTAL</b>		
	<b>178</b>	<b>193,502</b>

ST. VINCENT AND THE GRENADIENS PORT AUTHORITY  
**Clarence Keizer Education Award**

The SVG Port Authority continues to fulfil its Corporate Mandate through the annual distribution/disbursement of the Clarence Keizer Education Award which is in its 25th year, having commenced in 1995.

In the initial stages of the scholarship program, sponsorships were provided through the cost of all school books of the successful children: this method of assistance was however changed in the year 2000 and replaced by the disbursement of the financial assistance at the end of each academic year.

In 2000, the coverage of the scholarship was extended from five years of secondary to seven (7) years: Thus, including two years of studies at the community College/Tertiary level.

The name of the scholarship program was also subsequently changed from the SVG Port Authority Scholarship, to the Clarence Keizer Education Award in 2008; in honour of Mr. Clarence Keizer service as a Council Member of the Port Authority.

The 2020 recipients of the Clarence Keizer's Education Awards are as follows:

***Jaida Jackson***

***Jaden Snagg***

***Jedia Sayers***

***Awards were presented by SVGPA CEO Mr. Bishen John***



**Prepared by: St. Vincent and the Grenadines Port Authority**  
**P.O. Box 1237, Upper Bay Street, Kingstown, St. Vincent, West Indies**  
**Tel. #: 784-456-1830**  
**Fax # 784-456-2732**  
**Email: [portadmin@svgpa.com](mailto:portadmin@svgpa.com)**  
**Website: [svgpa.com](http://svgpa.com)**