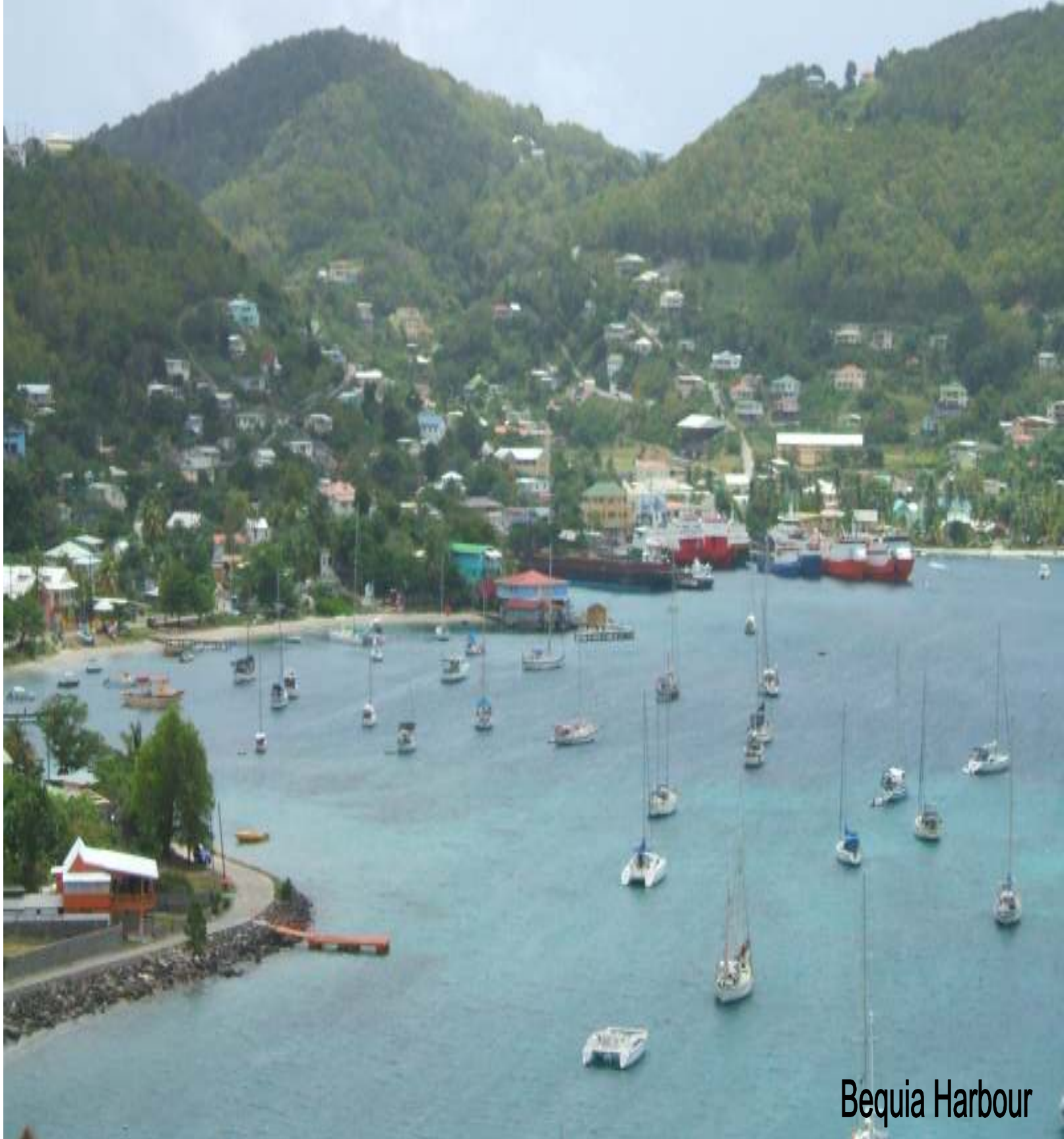


ST. VINCENT AND THE GRENADINES PORT AUTHORITY ANNUAL STATISTICAL DIGEST 2006



Bequia Harbour

TABLE OF CONTENTS

	Page
Foreword	ii
Definition of Terms and Abbreviations	iii
 <u>TABLES</u>	
Container Traffic	1-2
1.1 Monthly Container Statistics at Port Kingstown – 2005	3
1.2 Monthly Container Statistics at Port Kingstown – 2006	4
1.3 Five-year Container Throughput 2002 – 2006	5
1.4 Banana Activity 2005 - 2006	6
1.5 Monthly Cargo Tonnages by Type at Port Kingstown – 2005	7-8
1.6 Monthly Cargo Tonnages by Type at Port Kingstown – 2006	9-10
1.7 Cargo Traffic, Imports & Exports 2005 – 2006	11
1.8 Vessel Statistics by Type 2006	12
1.9 Cruise Statistics & Passenger Arrivals 2005 - 2006	13 -14
1.10 Tourist Season Statistics – October 2005 to April 2006	15
1.11 Cruise Calls & Pax. Arrivals for Kingstown & the Grenadines 2006	16
1.12 Cruise Vessel Arrivals by Lines 2006	17
1.13 Vehicle Statistics for 2006	18
1.14 Barrel Statistics for 2005 & 2006	19

FOREWORD

The St. Vincent and the Grenadines Port Authority Statistical Digest encloses data on cargo, vessel and cruise passenger activities at Port Kingstown. It also captures data on cruise vessel passenger arrivals in the Grenadines.

The intention of this publication is to provide statistics to all our present and impending customers, various stakeholders and the public at large who expectantly will find this digest valuable.

Any valuable propositions will be appreciated.

Paul Kirby
Port Manager

TERMS AND ABBREVIATIONS

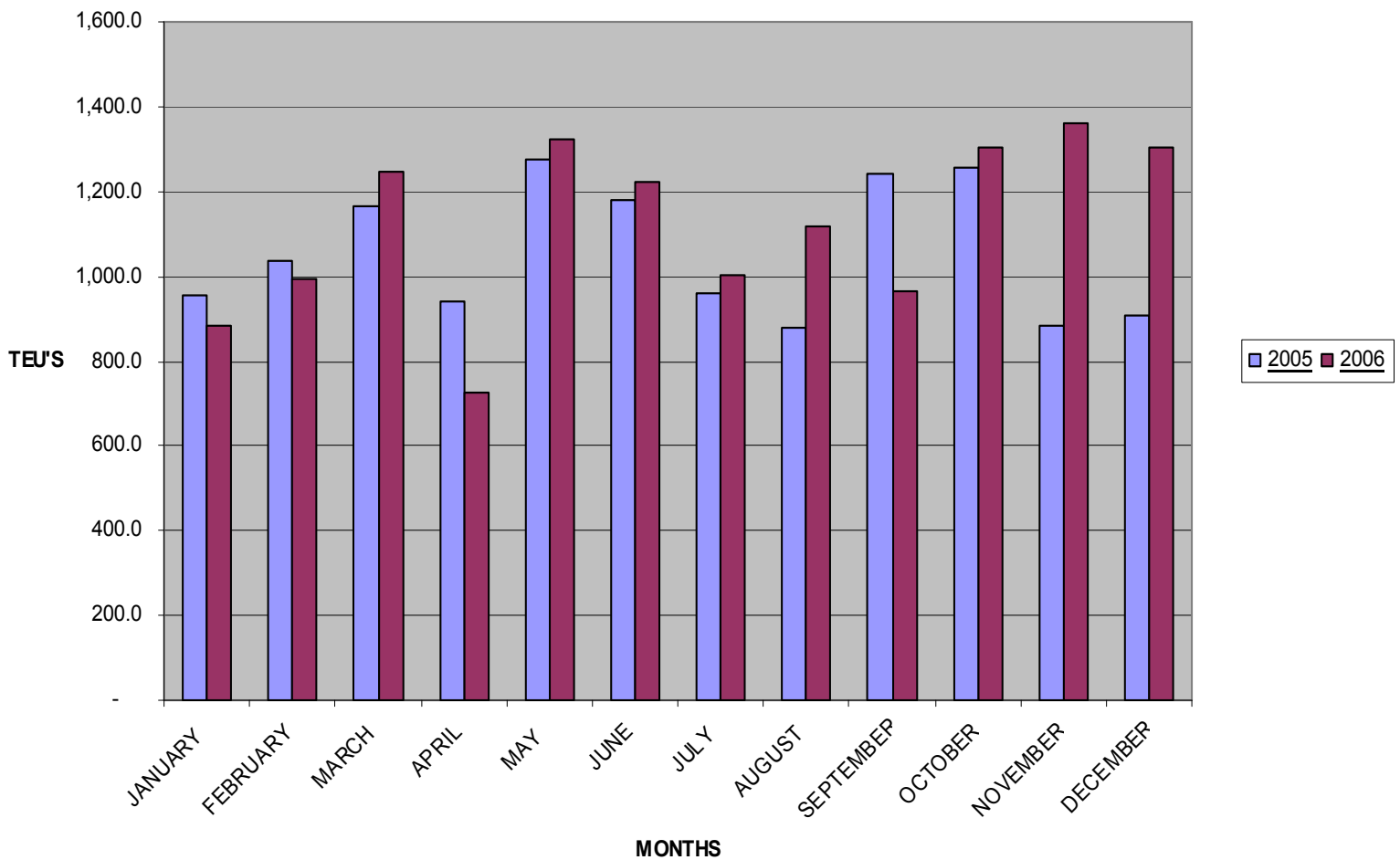
TEUS	-	Twenty equivalent units
TONS (TONNAGE)	-	A measurement equivalent to 2,000 lbs (American) or 2,240 lbs (English)
CONT. (CONTAINERIZED)	-	Cargo shipped in containers
TRANSHIPMENT	-	The transferring of cargo from one mode of transport to another or the same mode at a Port, which is not the Port of final destination
GRT	-	Gross Registered Tonnage
NRT	-	Net Registered Tonnage
BREAKBULK	-	Cargo that is loosely shipped in a ship's hold and not in a container
INBOUND	-	Imported or incoming
OUTBOUND	-	Exported or outgoing
THROUGHPUT	-	The total volume in tonnage of import and export production
RORO	-	Roll-on Roll-off Container on Wheels
PAX	-	Passengers

ST. VINCENT AND THE GRENADINES PORT AUTHORITY

CONTAINER TRAFFIC (2005-2006)

MONTH	DOMESTIC			TRANSHIPMENT			TOTALS (Teus)			TOTAL TONNAGE (Short)		
	2005	2006	GROWTH (%)	2005	2006	GROWTH (%)	2005	2006	GROWTH (%)	2005	2006	GROWTH (%)
1ST QUARTER												
JANUARY	953.5	881.5	(7.6)	-	-	-	953.5	881.5	(7.6)	7,785	10,497	34.8
FEBRUARY	1,038.5	995	(4.2)	-	-	-	1,038.5	995	(4.2)	11,435	13,549	18.5
MARCH	1,163.5	1,245	7.0	-	-	-	1,163.5	1,245	7.0	11,328	15,709	38.7
Sub-total	3,155.5	3,121.5	(1.1)	-	-	-	3,155.5	3,121.5	(1.1)	30,548	39,755.0	30.1
2ND QUARTER												
APRIL	939	728.5	(22.4)	-	-	-	939	728.5	(22.4)	11,680	13,159	12.7
MAY	1,276.5	1,321	3.5	-	-	-	1,276.5	1,321	3.5	15,651	15,183	(3.0)
JUNE	1,180	1,225.5	3.9	-	-	-	1,180	1,225.5	3.9	14,250	13,354	(6.3)
Sub-total	3,395.5	3,275.0	(3.5)	-	-	-	3,395.5	3,275.0	(3.5)	41,581	41,696.0	0.3
3RD QUARTER												
JULY	960.5	1004.5	4.6	-	-	-	960.5	1,004.5	4.6	11,586	13,840	19.5
AUGUST	880.5	1,117	26.9	-	-	-	880.5	1,117	26.9	11,548	13,944	20.7
SEPTEMBER	1,239.5	965	(22.1)	-	-	-	1,239.5	965	(22.1)	15,196	12,455	(18.0)
Sub-total	3,080.5	3,087	0.2	-	-	-	3,080.5	3,086.5	0.2	38,330	40,239.0	5.0
4TH QUARTER												
OCTOBER	1,257.5	1,303	3.6	-	-	-	1,257.5	1,303	3.6	15,456	17198	11.3
NOVEMBER	882	1359.5	54.1	-	-	-	882	1,359.5	54.1	13,295	18228	37.1
DECEMBER	906.5	1305.5	44.0	-	-	-	906.5	1,305.5	44.0	11,913	1305.5	(89.0)
Sub-total	3,046.0	3,968.0	30.3	-	-	-	3,046	3,968	30.3	40,664	36,731.5	(9.7)
TOTALS	12,677.5	13,451.0	6.1	-	-	-	12,677.5	13,451	6.1	151,123	158,422	4.8

ST.VINCENT AND THE GRENADINES PORT AUTHORITY CONTAINER TRAFFIC LANDED AND LOADED FOR YEARS 2005 AND 2006



Given a consistent growth in container activity at Port Kingstown in 2006 the year showed a respectable 6.1% increase in this area. Container traffic escalated from 12,677.5 TEUS in 2005 to 13,451 TEUS in 2006, (2004: 12,643.5). The increase in 2006 was attributed to an increase of 21.0% in container ships from 176 calls in 2005 to 213 calls in 2006.



The new Fantuzzi Reach Stacker at work

ST. VINCENT AND THE GRENADINES PORT AUTHORITY

MONTHLY CONTAINER STATISTICS AT PORT KINGSTOWN - 2005

INBOUND/OUTBOUND

MONTH		DOMESTIC						TRANSHIPMENT						TOTALS						LANDED/LOADED		TONNAGE
		10FT		20FT		40FT		10FT		20FT		40FT		10FT		20FT		40FT		BOXES	TEUS	
		MT	F	MT	F	MT	F	MT	F	MT	F	MT	F	MT	F	MT	F	MT	F			
JANUARY	IN	-	1	2	125	3	134	-	-	-	-	-	-	-	1	2	125	3	134	265	401.5	7,203
	OUT	-	-	202	18	159	7	-	-	-	-	-	-	-	-	202	18	159	7	386	552.0	582
FEBRUARY	IN	1	3	5	156	-	145	-	-	-	-	-	-	1	3	5	156	-	145	310	453.0	9,798
	OUT	5	-	121	64	185	14	-	-	-	-	-	-	5	-	121	64	185	14	389	585.5	1,637
MARCH	IN	-	3	2	218	1	200	-	-	-	-	-	-	-	3	2	218	1	200	424	623.5	10,670
	OUT	4	-	152	26	171	9	-	-	-	-	-	-	4	-	152	26	171	9	362	540.0	658
APRIL	IN	-	2	4	176	-	146	-	-	-	-	-	-	-	2	4	176	-	146	328	473.0	10,178
	OUT	-	-	115	57	136	11	-	-	-	-	-	-	-	-	115	57	136	11	319	466.0	1,502
MAY	IN	-	-	20	191	1	191	-	-	-	-	-	-	-	-	20	191	1	191	403	595.0	13,248
	OUT	2	1	153	57	213	22	-	-	-	-	-	-	2	1	153	57	213	22	448	681.5	2,403
JUNE	IN	-	3	4	209	-	185	-	-	-	-	-	-	-	3	4	209	-	185	401	584.5	12,737
	OUT	3	-	155	61	182	7	-	-	-	-	-	-	3	-	155	61	182	7	408	595.5	1,513
JULY	IN	2	4	6	173	2	141	-	-	-	-	-	-	2	4	6	173	2	141	328	468.0	10,070
	OUT	4	1	129	57	144	8	-	-	-	-	-	-	4	1	129	57	144	8	343	492.5	1,516
AUGUST	IN	-	2	1	2	-	174	-	-	-	-	-	-	-	2	1	2	-	174	179	352.0	10,557
	OUT	2	1	141	38	169	5	-	-	-	-	-	-	2	1	141	38	169	5	356	528.5	991
SEPTEMBER	IN	-	5	3	220	5	205	-	-	-	-	-	-	-	5	3	220	5	205	438	645.5	13,294
	OUT	3	1	170	60	150	31	-	-	-	-	-	-	3	1	170	60	150	31	415	594.0	1,902
OCTOBER	IN	-	5	2	229	-	227	-	-	-	-	-	-	-	5	2	229	-	227	463	687.5	14,023
	OUT	3	1	136	48	187	5	-	-	-	-	-	-	3	1	136	48	187	5	380	570.0	1,433
NOVEMBER	IN	-	2	1	159	-	144	-	-	-	-	-	-	-	2	1	159	-	144	306	449.0	11,579
	OUT	-	2	113	57	124	7	-	-	-	-	-	-	-	2	113	57	124	7	303	433.0	1,716
DECEMBER	IN	-	8	1	189	-	128	-	-	-	-	-	-	-	8	1	189	-	128	326	450.0	10,533
	OUT	5	-	121	41	139	7	-	-	-	-	-	-	5	-	121	41	139	7	313	456.5	1,380
TOTAL	IN	3	38	51	2,047	12	2,020	-	-	-	-	-	-	3	38	51	2,047	12	2,020	4,171	6,183	133,890
	OUT	31	7	1,708	584	1,959	133	-	-	-	-	-	-	31	7	1,708	584	1,959	133	4,422	6,495	17,233

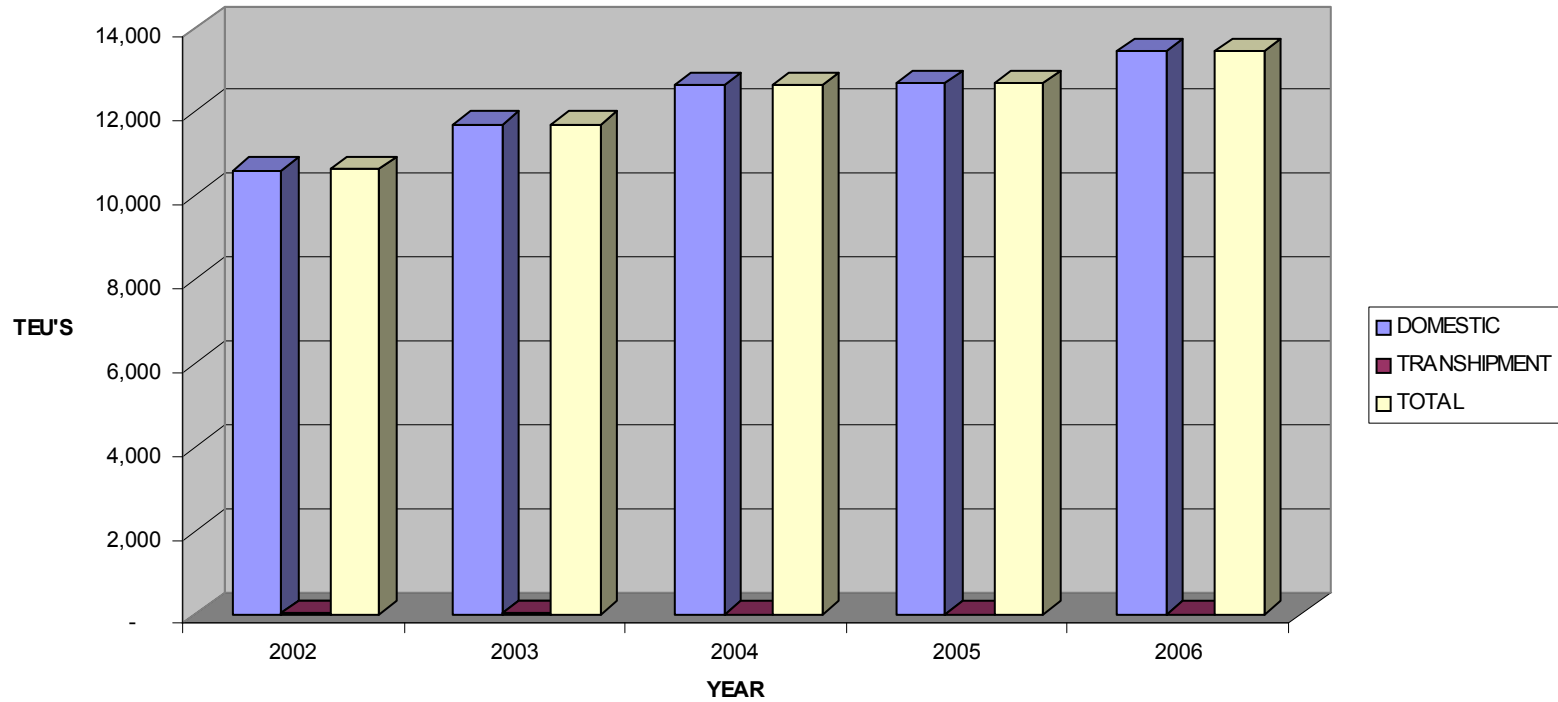
ST. VINCENT AND THE GRENADINES PORT AUTHORITY

MONTHLY CONTAINER STATISTICS AT PORT KINGSTOWN - 2006

INBOUND/OUTBOUND

MONTH		DOMESTIC						TRANSHIPMENT						TOTALS						LANDED/LOADED		TONNAGE
		10FT		20FT		40FT		10FT		20FT		40FT		10FT		20FT		40FT		BOXES	TEUS	
		MT	F	MT	F	MT	F	MT	F	MT	F	MT	F	MT	F	MT	F	MT	F			
JANUARY	IN	-	3	-	115	1	137	-	-	-	-	-	-	-	3	-	115	1	137	256	392.5	9,170
	OUT	5	1	132	50	148	4	-	-	-	-	-	-	5	1	132	50	148	4	340	489.0	1,327
FEBRUARY	IN	-	4	1	175	1	180	-	-	-	-	-	-	-	4	1	175	1	180	361	540.0	11,774
	OUT	2	-	88	54	148	8	-	-	-	-	-	-	2	-	88	54	148	8	300	455.0	1,775
MARCH	IN	1	5	-	200	-	216	-	-	-	-	-	-	1	5	-	200	-	216	422	635.0	13,472
	OUT	4	-	146	64	195	4	-	-	-	-	-	-	4	-	146	64	195	4	413	610.0	2,237
APRIL	IN	-	5	2	196	-	193	-	-	-	-	-	-	-	5	2	196	-	193	396	586.5	11,682
	OUT	2	2	54	54	8	8	-	-	-	-	-	-	2	2	54	54	8	8	128	142.0	1,477
MAY	IN	-	4	1	242	2	185	-	-	-	-	-	-	-	4	1	242	2	185	434	619.0	12,731
	OUT	8	-	154	76	225	9	-	-	-	-	-	-	8	-	154	76	225	9	472	702.0	2,452
JUNE	IN	-	9	1	206	1	222	-	-	-	-	-	-	-	9	1	206	1	222	439	657.5	13,088
	OUT	1	1	120	69	177	12	-	-	-	-	-	-	1	1	120	69	177	12	380	568.0	266
JULY	IN	-	6	2	184	1	155	-	-	-	-	-	-	-	6	2	184	1	155	348	501.0	11,171
	OUT	13	-	90	87	154	6	-	-	-	-	-	-	13	-	90	87	154	6	350	503.5	2,669
AUGUST	IN	1	3	1	183		170	-	-	-	-	-	-	1	3	1	183	-	170	358	526.0	11,425
	OUT	3	1	119	90	184	6	-	-	-	-	-	-	3	1	119	90	184	6	403	591.0	2,519
SEPTEMBER	IN	-	5	1	160	5	163	3	-	-	-	-	-	3	5	1	160	5	163	337	501.0	10,527
	OUT	4	-	101	79	134	7	-	-	-	-	-	-	4	-	101	79	134	7	325	464.0	1,928
OCTOBER	IN	-	8	27	194	1	242	-	-	-	-	-	-	-	8	27	194	1	242	472	711.0	14,529
	OUT	10	-	100	87	189	11	-	-	-	-	-	-	10	-	100	87	189	11	397	592.0	2,669
NOVEMBER	IN	-	5	-	207	1	227	-	-	-	-	-	-	-	5	-	207	1	227	440	665.5	15,163
	OUT	4	-	93	97	239	12	-	-	-	-	-	-	4	-	93	97	239	12	445	694.0	3,065
DECEMBER	IN	-	7	5	249	2	223	-	-	-	-	-	-	-	7	5	249	2	223	486	707.5	15,902
	OUT	4	-	134	82	181	9	-	-	-	-	-	-	4	-	134	82	181	9	410	598.0	2,465
TOTAL	IN	2	64	41	2,311	15	2,313	3	-	-	-	-	-	5	64	41	2,311	15	2,313	4,749	7,043	150,634
	OUT	60	5	1,331	889	1,982	96	-	-	-	-	-	-	60	5	1,331	889	1,982	96	4,363	6,409	24,849

**ST. VINCENT AND THE GRENADINES PORT AUTHORITY FIVE YEAR
CONTAINER THROUGHPUT IN TEU'S FOR PERIOD 2002- 2006**

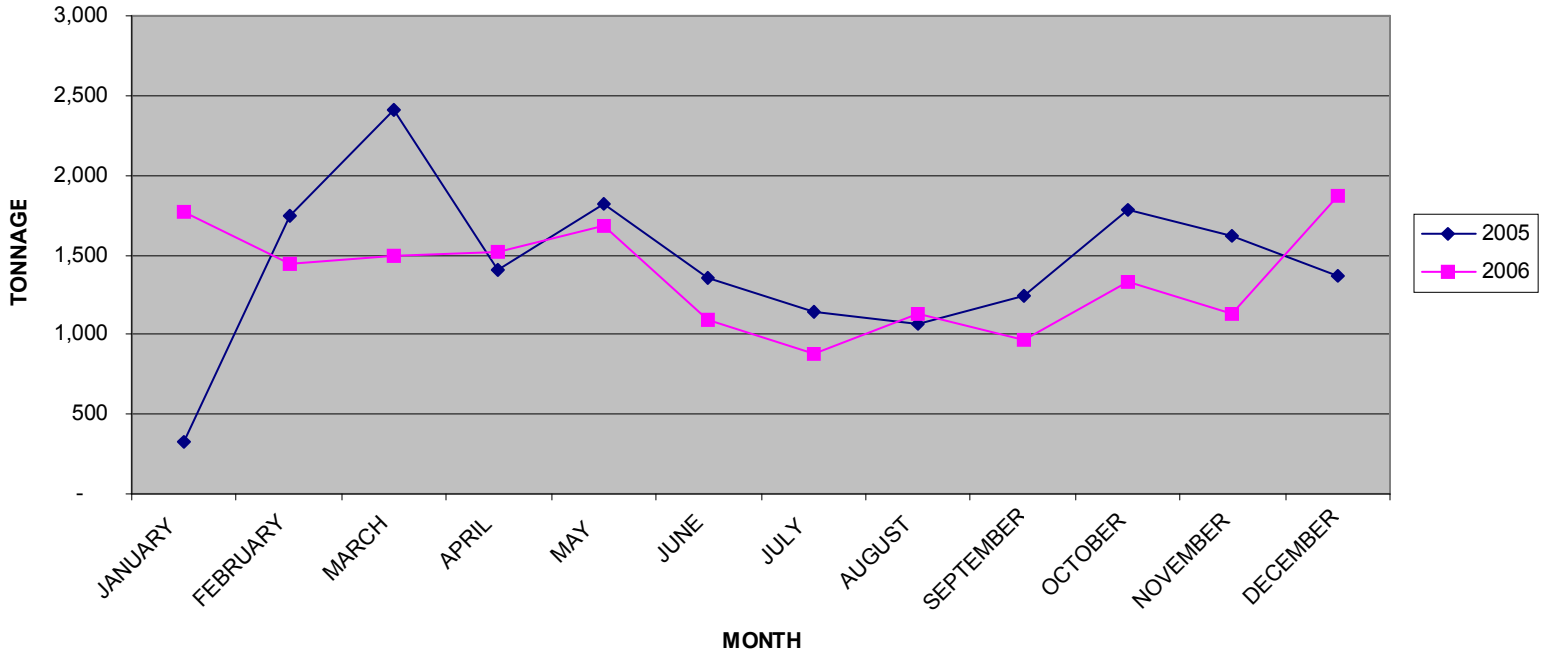


ST. VINCENT AND THE GRENADINES PORT AUTHORITY

FIVE (5) YEAR COMPARISON OF CONTAINER THROUGHPUT IN TEUS AT PORT KINGSTOWN FOR PERIOD 2002 - 2006

YEAR	DOMESTIC	TRANSHIPMENT	TOTAL	GROWTH (%)
2001	9,201		9,201	
2002	10,600	20	10,620	15.4
2003	11,700	11	11,711	10.3
2004	12,644	-	12,644	8.0
2005	12,678	-	12,678	0.3
2006	13,451	3	13,451	6.1

ST. VINCENT AND THE GRENADINES PORT AUTHORITY BANANA ACTIVITY FOR YEARS 2005 AND 2006



Banana exports in the year 2006 amounted to 16,302 tonnes as compared to 17,278 tonnes in 2005. Adverse weather conditions in the first quarter of 2006 was the main contributor to the decline in exports over the year. Although reflecting a decrease of 6.0% in 2006, this however, was a marked improvement when compared to the 21.0% decline in 2005 from 2004 when 21,911 tonnes were reported.



A typical day when bananas are being loaded for export

ST. VINCENT AND THE GRENADINES PORT AUTHORITY

INBOUND

MONTHLY CARGO TONNAGES STATISTICS BY TYPE - 2005

MONTH	REGIONAL		EXTRA REGIONAL								TRANSHIPMENT		TOTALS	
	GEN. CARGO B'BULK	SUGAR	STEEL	F'TILIZER	CEMENT	GEN. CARGO B'BULK	VEHICLES	LUMBER	FUEL	CONT.	B'BULK	CONT.	MTLY	YTD
JANUARY	1,025	300	-	-	4,251	53	1,424	-	3,438	7,203	-	-	17,694	17,694
FEBRUARY	1,151	-	-	910	4,826	161	826	-	4,197	9,798	-	-	21,869	39,563
MARCH	1,512	300	-	-	5,271	658	1,176	-	4,249	10,670	-	-	23,836	63,399
APRIL	1,322	-	-	-	7,201	208	1,465	-	6,138	10,178	-	-	26,512	89,911
MAY	1,981	300	-	-	4,936	430	994	-	5,289	13,248	-	-	27,178	117,089
JUNE	1,405	300	-	-	4,201	359	1,980	-	3,954	12,737	-	-	24,936	142,025
JULY	2,113	300	-	-	7,571	360	976	-	5,332	10,070	-	-	26,722	168,747
AUGUST	1,864	-	-	795	4,721	449	1,322	-	4,635	10,557	-	-	24,343	193,090
SEPTEMBER	1,617	200	-	-	4,114	677	1,035	-	4,977	13,294	-	-	25,914	219,004
OCTOBER	2,674	311	-	-	6,761	249	1,597	-	5,222	14,023	-	-	30,837	249,841
NOVEMBER	2,075	300	-	-	951	485	110	-	3,104	11,579	-	-	18,604	268,445
DECEMBER	2,075	300	-	-	4,149	828	962	-	7,024	10,533	-	-	25,871	294,316
TOTAL	20,814	2,611	-	1,705	58,953	4,917	13,867	-	57,559	133,890	-	-	294,316	

ST. VINCENT AND THE GRENADINES PORT AUTHORITY

OUTBOUND

MONTHLY CARGO TONNAGES STATISTICS BY TYPE - 2005

MONTH	REGIONAL		EXTRA REGIONAL			TRANSHIPMENT			TOTALS	
	GEN. CARGO B'BULK	CONT.	GEN. CARGO B'BULK	BANANAS	OTHER PRODUCE	CONT.	B'BULK	CONT.	MTLY	YTD
JANUARY	661	-	-	325	4	582	-	-	1,572	1,572
FEBRUARY	815	-	2	1,745	52	1,637	-	-	4,251	5,823
MARCH	1,004	-	18	2,404	128	658	-	-	4,212	10,035
APRIL	767	-	7	1,402	40	1,502	-	-	3,718	13,753
MAY	1,165	-	3	1,821	51	2,403	-	-	5,443	19,196
JUNE	917	-	26	1,352	32	1,513	-	-	3,840	23,036
JULY	1,045	-	4	1,136	26	1,516	-	-	3,727	26,763
AUGUST	1,052	-	2	1,071	39	991	-	-	3,155	29,918
SEPTEMBER	1,091	-	1,111	1,245	77	1,902	-	-	5,426	35,344
OCTOBER	1,419	-	43	1,781	64	1,433	-	-	4,740	40,084
NOVEMBER	1,192	-	34	1,623	55	1,716	-	-	4,620	44,704
DECEMBER	851	-	-	1,373	50	1,380	-	-	3,654	48,358
TOTAL	11,979	-	1,250	17,278	618	17,233	-	-	48,358	

ST. VINCENT AND THE GRENADINES PORT AUTHORITY

INBOUND

MONTHLY CARGO TONNAGES STATISTICS BY TYPE - 2006

MONTH	REGIONAL		EXTRA REGIONAL								TRANSHIPMENT		TOTALS	
	GEN. CARGO B'BULK	SUGAR	STEEL	F'TILIZER	CEMENT	GEN. CARGO B'BULK	VEHICLES	LUMBER	FUEL	CONT.	B'BULK	CONT.	MTLY	YTD
JANUARY	1,351	-	765	-	5,059	245	852	-	6,888	9,170	-	-	24,330	24,330
FEBRUARY	2,504	306	-	-	4,699	235	446	-	6,615	11,774	-	-	26,579	50,909
MARCH	2,644	-	-	-	4,150	260	4,682	-	5,643	13,472	-	-	30,851	81,760
APRIL	2,354	300	-	-	6,013	218	1,395	-	5,874	11,682	-	-	27,836	109,596
MAY	1,951	300	30	875	5,344	188	40	-	5,187	12,731	-	-	26,646	136,242
JUNE	2,078	300	-	-	3,302	288	1,805	-	5,547	13,088	-	-	26,408	162,650
JULY	2,480	-	-	-	7,500	194	21	-	6,178	11,171	-	-	27,544	190,194
AUGUST	2,448	-	-	-	11,136	228	2,267	-	6,400	11,425	-	-	33,904	224,098
SEPTEMBER	1,929	300	-	915	1,950	163	1,182	-	6,201	10,527	-	-	23,167	247,265
OCTOBER	2,396	400	-	-	5,149	317	1,440	-	6,127	14,529	-	-	30,358	277,623
NOVEMBER	2,946	500	-	-	3,545	294	115	-	4,692	15,163	-	-	27,255	304,878
DECEMBER	2,915	-	-	853	5,792	357	12	-	5,947	15,902	-	-	31,778	336,656
TOTAL	27,996	2,406	795	2,643	63,639	2,987	14,257	-	71,299	150,634	-	-	336,656	

ST. VINCENT AND THE GRENADINES PORT AUTHORITY

OUTBOUND

MONTHLY CARGO TONNAGES STATISTICS BY TYPE - 2006

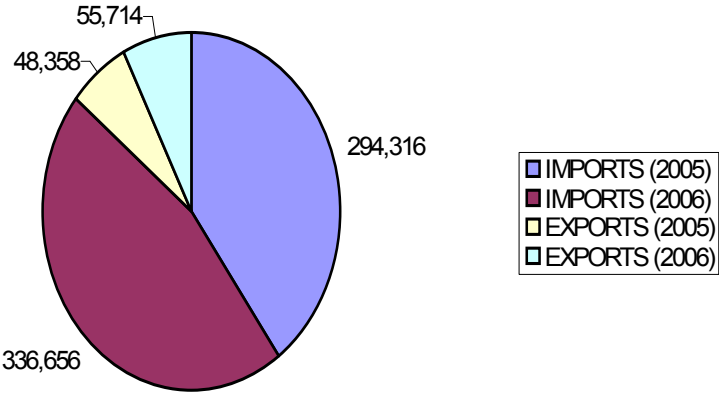
MONTH	REGIONAL		EXTRA REGIONAL			TRANSHIPMENT			TOTALS	
	GEN. CARGO B'BULK	CONT.	GEN. CARGO B'BULK	BANANAS	OTHER PRODUCE	CONT.	B'BULK	CONT.	MTLY	YTD
JANUARY	733	-	2	1,775	71	1,327	-	-	3,908	3,908
FEBRUARY	933	-	10	1,442	53	1,775	-	-	4,213	8,121
MARCH	1,030	-	1,326	1,494	63	2,237	-	-	6,150	14,271
APRIL	1,112	-	15	1,519	46	1,477	-	-	4,169	18,440
MAY	1,030	-	13	1,686	77	2,452	-	-	5,258	23,698
JUNE	1,015	-	8	1,098	40	266	-	-	2,427	26,125
JULY	1,004	-	9	875	14	2,669	-	-	4,571	30,696
AUGUST	1,009	-	23	1,124	51	2,519	-	-	4,726	35,422
SEPTEMBER	1,206	-	9	962	68	1,928	-	-	4,173	39,595
OCTOBER	1,209	-	15	1,331	37	2,669	-	-	5,261	44,856
NOVEMBER	1,101	-	35	1,128	64	3,065	-	-	5,393	50,249
DECEMBER	1,059	-	15	1,868	58	2,465	-	-	5,465	55,714
TOTAL	12,441	-	1,480	16,302	642	24,849	-	-	55,714	

ST. VINCENT AND THE GRENADINES PORT AUTHORITY

CARGO TRAFFIC - TONNAGE AT PORT KINGSTOWN 2005 - 2006

YEAR	IMPORT	EXPORT	TRAFFIC	GROWTH % (Traffic)
2004	267,115	45,083	312,198	
2005	294,316	48,358	342,674	9.8
2006	336,656	55,714	392,370	14.5

CARGO TRAFFIC IMPORTS AND EXPORTS
TONNAGE AT PORT KINGSTOWN 2005-2006



ST. VINCENT AND THE GRENADINES PORT AUTHORITY

VESSEL STATISTICS BY TYPE (2006)

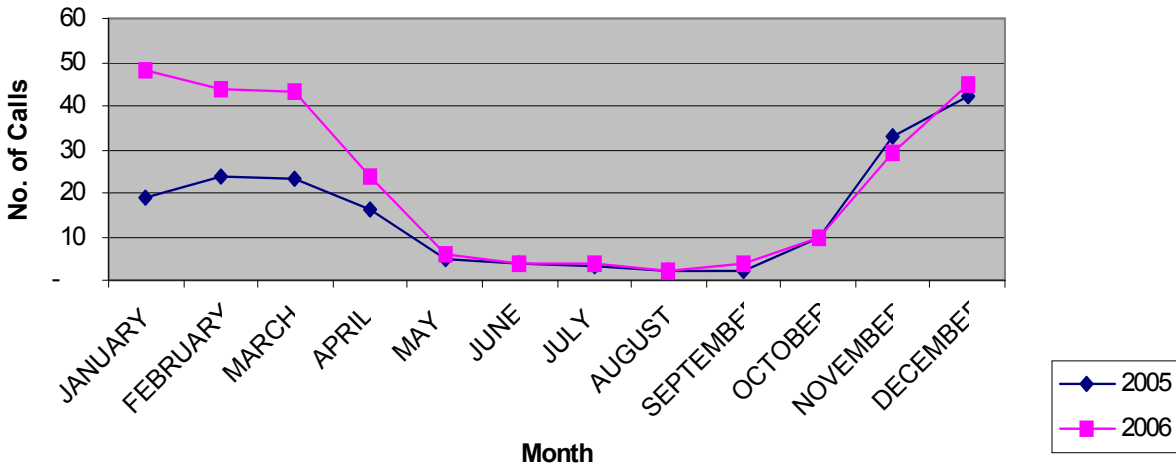
PORT KINGSTOWN ONLY

TYPE OF VESSEL/ SHIP	TOTAL GROSS TONNAGE (GRT)	TOTAL NET TONNAGE (NRT)	AVERAGE GROSS TONNAGE	NUMBER OF VESSEL CALLS	LOCAL	FOREIGN
CARGO VESSELS: <i>OVER 100 TONS</i>	83,854	39,030	5,406	187	129	58
<i>UNDER 100 TONS</i>	7,534	4,904	816	113	49	64
RO RO	650,727	198,044	401,208	25	5	20
CONTAINER SHIPS	1,091,421	502,011	59,900	213	27	186
TANKER	458,659	189,480	72,969	75	-	75
REEFERS	438,108	222,711	102,939	51	-	51
BARGE	1,548	602	1,548	3	-	3
TUGS	1,319	391	960	8	5	3
BULK CARRIERS	171,793	88,565	66,378	35	-	35
CRUISE SHIPS	1,953,047	984,341	200,743	71	-	71
TOTALS	4,858,010	2,230,079	912,867	781	215	566

ST. VINCENT AND THE GRENADINES PORT AUTHORITY
CRUISE CALLS AND PASSENGER ARRIVALS STATISTICS (2005 - 2006)
Port Kingstown & the Grenadines

MONTH	CRUISE CALLS			MONTH	PASSENGER ARRIVALS		
	2005	2006	GROWTH %		2005	2006	GROWTH %
JANUARY	19	48	152.6	JANUARY	8,979	18,827	109.7
FEBRUARY	24	44	83.3	FEBRUARY	7,909	19,712	149.2
MARCH	23	43	87.0	MARCH	13,257	15,393	16.1
APRIL	16	24	50.0	APRIL	3,764	8,766	132.9
MAY	5	6	20.0	MAY	287	422	47.0
JUNE	4	4	-	JUNE	231	212	(8.2)
JULY	3	4	33.3	JULY	153	240	56.9
AUGUST	2	2	-	AUGUST	75	120	60.0
SEPTEMBER	2	4	100.0	SEPTEMBER	82	180	119.5
OCTOBER	10	9	(10.0)	OCTOBER	2,501	1,644	(34.3)
NOVEMBER	33	29	(12.1)	NOVEMBER	11,735	16,701	42.3
DECEMBER	42	45	7.1	DECEMBER	20,882	24,257	16.2
TOTALS	183	262	43.2	TOTALS	69,855	106,474	52.4

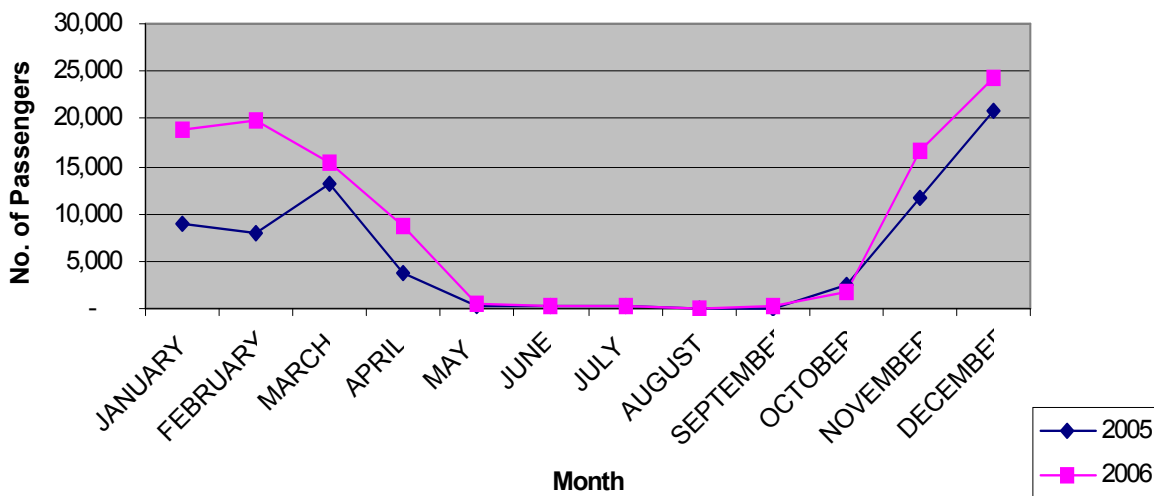
**ST. VINCENT AND THE GRENADINES PORT AUTHORITY
CRUISE CALLS FOR YEARS 2005 AND 2006**



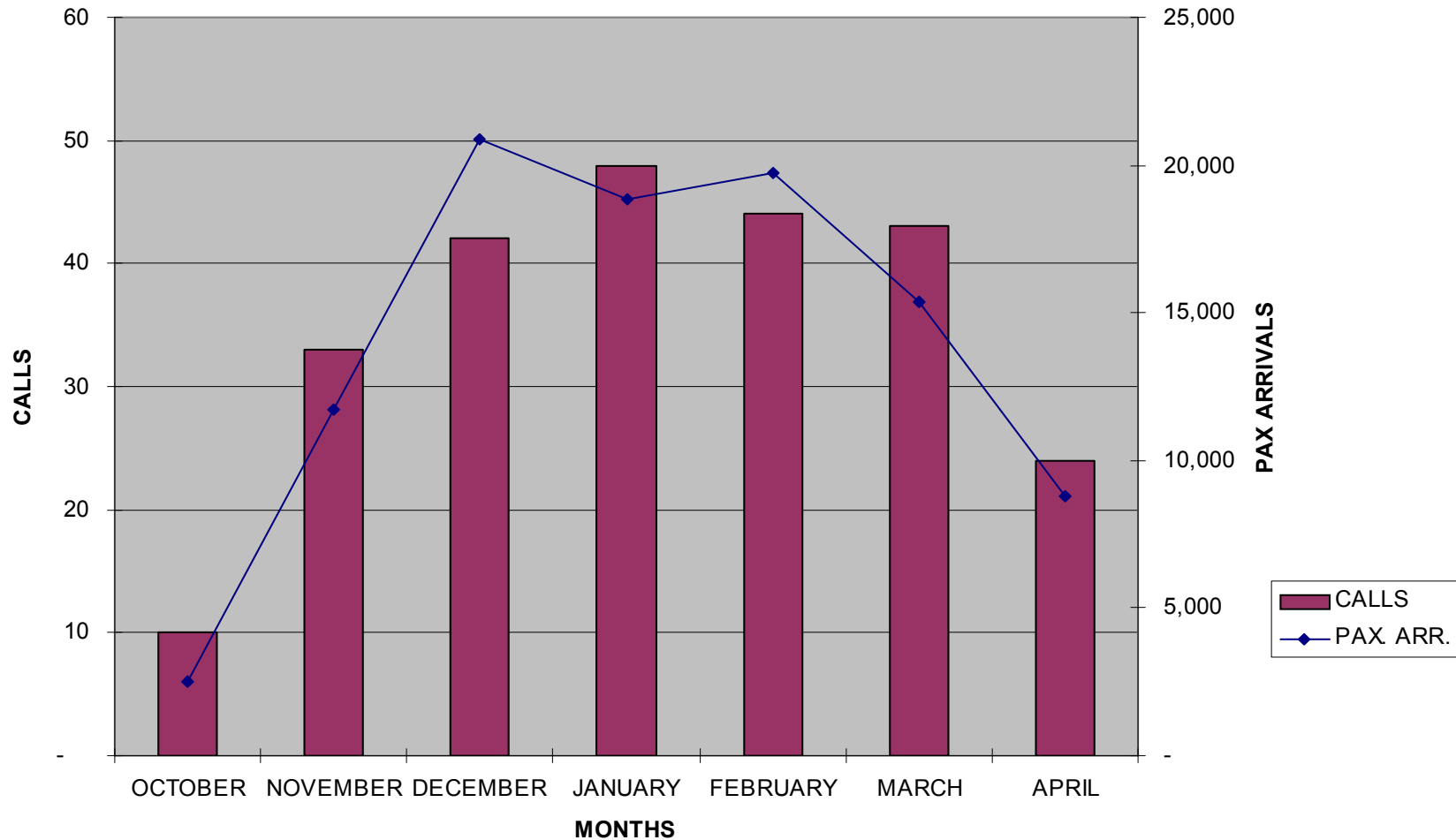
Two cruise ships made their inaugural visits to St. Vincent and the Grenadines during the year 2006. The Blue Moon's first call was on October 31st, 2006 and its total calls and passenger arrivals for the year amounted to 18 and 10,964 respectively. Ocean Village made its first visit on February 6th, 2006 and reported total calls and passenger arrivals for the year of 8 and 13,149 respectively.

These visits would have contributed favourably to the tremendous growth in both cruise calls and passenger arrivals in 2006. Cruise calls and Passenger arrivals hiked by 43.2% and 52.4% respectively during the year. In 2006 total calls amounted to 262 while passenger arrivals amounted to 106,474, while in 2005 calls equaled 183 and passenger arrivals were 69,855.

**ST. VINCENT AND THE GRENADINES PORT AUTHORITY
PASSENGER ARRIVALS FOR YEARS 2005 AND 2006**

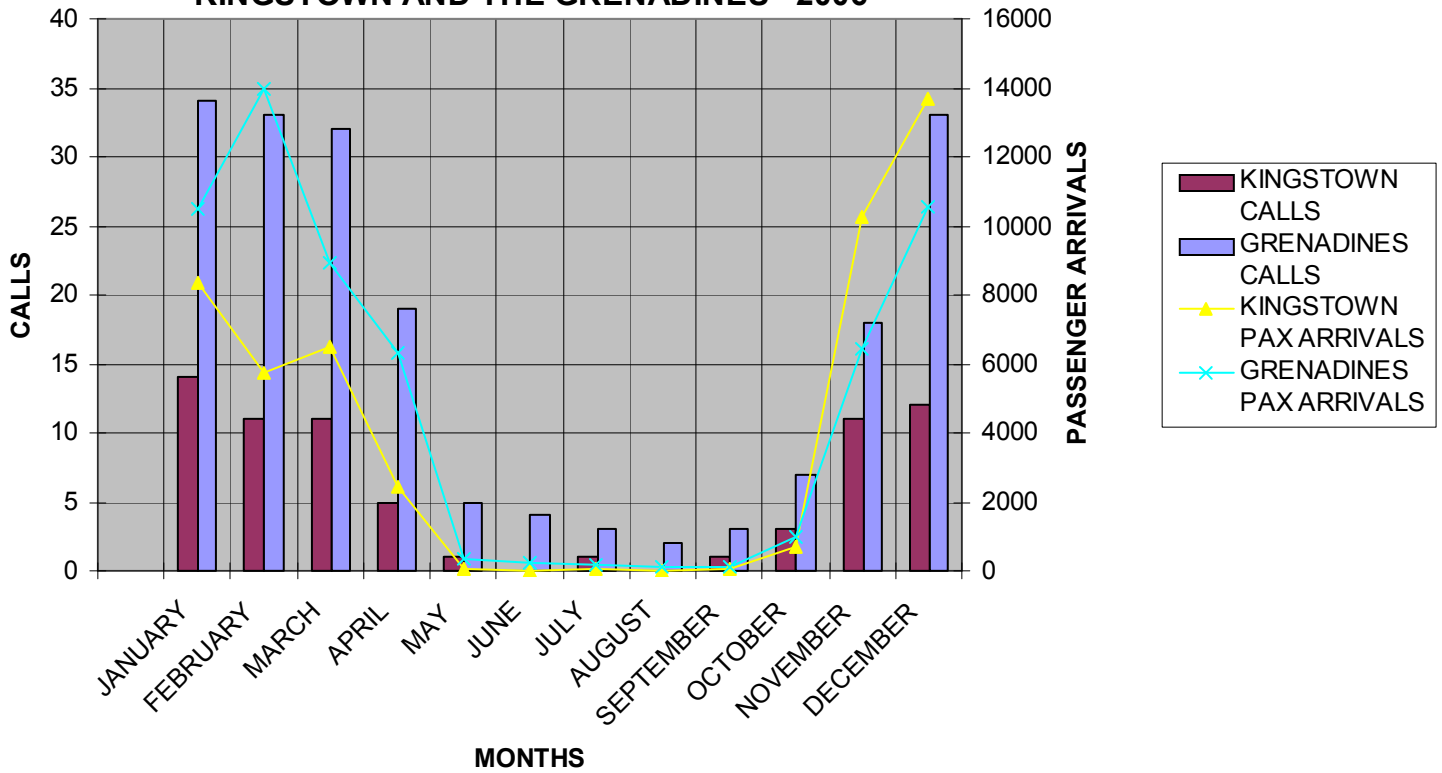


**ST. VINCENT AND THE GRENADINES PORT AUTHORITY
TOURIST SEASON - OCTOBER 2005 TO APRIL 2006**



The Cruise/Tourist Season for the period October 2005 to April 2006 was a very busy and successful one for St. Vincent and the Grenadines. A total of 244 calls were made during the season with 97,816 passenger arrivals. In the previous season 2004/2005, there were 149 calls and 53,337 passengers thus reflecting dramatic increases of 64.0% in cruise calls and 83.0% in passenger arrivals when compared to 2004/2005.

**ST. VINCENT AND THE GRENADINES
CRUISE CALLS AND PASSENGER ARRIVALS FOR
KINGSTOWN AND THE GRENADINES - 2006**



Although 75.0% of the cruise vessels to the country called in the Grenadines in 2006, only 55.0% of passenger arrivals was recorded. The number of calls to the Grenadines amounted to 193, while 69 calls were made to Port Kingstown. Passenger arrivals of 58,722 were recorded in the Grenadines and 47,752 in Port Kingstown..



CRUISE VESSEL CLUBMED II OUT STREAM IN THE BEQUIA HARBOUR

**ST. VINCENT AND THE GRENADINES PORT AUTHORITY
CRUISE SHIP ARRIVALS BY LINE / COMPANY
FOR YEAR 2006**

NAMES OF CRUISE LINES	NO. OF CALLS	NO .OF PASSENGERS
FRED OLSEN	4	2,859
AIDA CRUISES	3	3,653
STAR CLIPPER MANACO	20	3,560
CUNARD/SEABORNE	6	1,082
CONSTALLATION CRUISE HOLIDAY	11	2,575
HOLIDAY KREUZFOLUTION	6	3,567
WIND JAMMAR	62	3,564
PULLMANPUR CRUISES	18	10,964
V. SHIP CRUISE LINE	1	327
SAGA SHIPPING CO. LTD.	1	540
PRINCESS CRUISE LINES	9	17,905
SEA CLOUD CRUISES	19	954
P & O CRUISES	22	38,480
WIND STAR CRUISES	14	3,805
CLUB MED	10	2,921
HAPAG-LLOYD KREUXFAHRLLEN	1	164
EASY CRUISE	33	3,598
SILVER SEA CRUISES	5	1,728
TRAVELSCOPE PROMS LTD.	4	1,957
MTC TRADE CONSULTANCY GMBH	3	1,118
TRANS OCEAN SHIPPING	1	91
SEA DREAM YACHT CLUB	8	728
PASSAT SHIP MANAGEMENT	1	334
TOTAL	262	106,474

ST. VINCENT AND THE GRENADINES PORT AUTHORITY
VEHICLE STATISTICS
2006

DATE	NAME OF VESSEL	AGENT	SOURCE	NO. OF VEHICLES
4 th January, 2006	Heroic Ace	Coreas	Japan	51
2 nd February, 2006	Orion Leader	Coreas	Japan	33
5 th March, 2006	Grand Pavo	Coreas	Japan	197
28 th March, 2006	Courageous Ace	Coreas	Japan	69
25 th April, 2006	Phoenix Leader	W.J. Abbott	Japan	81
24 th June, 2006	Excellent Ace	Coreas	Japan	90
3 rd August, 2006	Grand Neptune	Abbott	Japan	84
24 th August, 2006	Grand Phoenix	Abbott	Japan	89
24 th September, 2006	Firmanent Ace	Coreas	Japan	68
29 th October, 2006	Grand Duke	W.J. Abbott	Japan	112
Total				874



CAR VESSEL—COURAGEOUS ACE

ST. VINCENT AND THE GRENADINES PORT AUTHORITY

BARREL STATISTICS FOR YEARS 2005 & 2006

MONTH	2006	2005
JANUARY	596	429
FEBRUARY	483	222
MARCH	830	865
APRIL	1,109	595
MAY	1,017	1,094
JUNE	1,564	1,659
JULY	1,071	1,257
AUGUST	1,016	1,118
SEPTEMBER	818	1,443
OCTOBER	1,582	1,439
NOVEMBER	1,065	987
DECEMBER	5,161	1,224
TOTAL	16,312	12,332

NB: Barrels that were processed at the Warehouse in Campden Park in 2005 are included in the above statistics which amounted to 5,134.



PORT KINGSTOWN'S TRANSIT SHED
WITH CARGO ON THE MORDERN RACK-
ING SYSTEM

Prepared by: St. Vincent and the Grenadines Port Authority
P.O. Box 1237, Upper Bay Street, Kingstown, St. Vincent, West Indies
Tel. #: 784-456-1830
Fax #: 784-456-2732
Email: portsvg@vincysurf.com
Website: svgpa.com